

Instrument Summary:

Instrument ID: iCAP Q
Serial Number: Undefined

Labbook Summary:

Path and filename: _Application Data\Workspace\LabBooks\wlw\20210831-2.imexp
Labbook created by: Administrator
Based on template:
Hardware configuration: iCAPQ1
Labbook type: eQuant
Qtegra version (last saved): 2.7.2425.154
Labbook started: 8/31/2021 4:11:02 PM
Labbook finished: 8/31/2021 5:32:23 PM

Method Summary:

Isotope	Mode	Dwell time (s)	# of Channels	Spacing	Resolution	IS
9Be (KED)	KED	0.03	3	0.1	Normal	
11B (KED)	KED	0.03	3	0.1	Normal	
24Mg (KED)	KED	0.03	3	0.1	Normal	
27Al (KED)	KED	0.03	3	0.1	Normal	
51V (KED)	KED	0.03	3	0.1	Normal	
52Cr (KED)	KED	0.03	3	0.1	Normal	
55Mn (KED)	KED	0.03	3	0.1	Normal	
56Fe (KED)	KED	0.03	3	0.1	Normal	
58Ni (KED)	KED	0.03	3	0.1	Normal	
59Co (KED)	KED	0.03	3	0.1	Normal	
63Cu (KED)	KED	0.03	3	0.1	Normal	
64Zn (KED)	KED	0.03	3	0.1	Normal	
69Ga (KED)	KED	0.03	3	0.1	Normal	
75As (KED)	KED	0.03	3	0.1	Normal	
80Se (KED)	KED	0.03	3	0.1	Normal	
85Rb (KED)	KED	0.03	3	0.1	Normal	
88Sr (KED)	KED	0.03	3	0.1	Normal	
107Ag (KED)	KED	0.03	3	0.1	Normal	
114Cd (KED)	KED	0.03	3	0.1	Normal	
133Cs (KED)	KED	0.03	3	0.1	Normal	
138Ba (KED)	KED	0.03	3	0.1	Normal	
139La (KED)	KED	0.03	3	0.1	Normal	
140Ce (KED)	KED	0.03	3	0.1	Normal	
141Pr (KED)	KED	0.03	3	0.1	Normal	
142Nd (KED)	KED	0.03	3	0.1	Normal	
152Sm (KED)	KED	0.03	3	0.1	Normal	
153Eu (KED)	KED	0.03	3	0.1	Normal	
158Gd (KED)	KED	0.03	3	0.1	Normal	
164Dy (KED)	KED	0.03	3	0.1	Normal	
165Ho (KED)	KED	0.03	3	0.1	Normal	
166Er (KED)	KED	0.03	3	0.1	Normal	
169Tm (KED)	KED	0.03	3	0.1	Normal	
174Yb (KED)	KED	0.03	3	0.1	Normal	
175Lu (KED)	KED	0.03	3	0.1	Normal	
205Tl (KED)	KED	0.03	3	0.1	Normal	
208Pb (KED)	KED	0.03	3	0.1	Normal	
232Th (KED)	KED	0.03	3	0.1	Normal	
238U (KED)	KED	0.03	3	0.1	Normal	

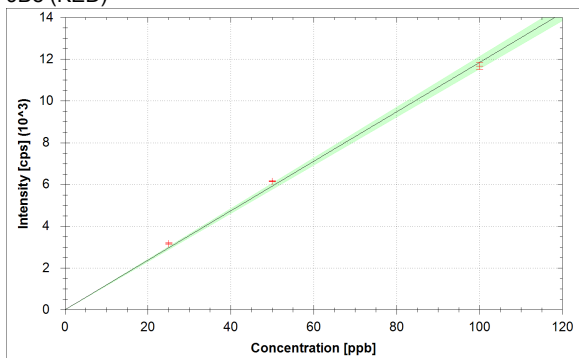
Isotope	Mode	Dwell time (s)	# of Channels	Spacing	Resolution
9Be (KED)	KED	0.03	3	0.1	Normal
11B (KED)	KED	0.03	3	0.1	Normal
24Mg (KED)	KED	0.03	3	0.1	Normal
27Al (KED)	KED	0.03	3	0.1	Normal
51V (KED)	KED	0.03	3	0.1	Normal
52Cr (KED)	KED	0.03	3	0.1	Normal
55Mn (KED)	KED	0.03	3	0.1	Normal
56Fe (KED)	KED	0.03	3	0.1	Normal
58Ni (KED)	KED	0.03	3	0.1	Normal
59Co (KED)	KED	0.03	3	0.1	Normal
63Cu (KED)	KED	0.03	3	0.1	Normal
64Zn (KED)	KED	0.03	3	0.1	Normal
69Ga (KED)	KED	0.03	3	0.1	Normal
75As (KED)	KED	0.03	3	0.1	Normal
80Se (KED)	KED	0.03	3	0.1	Normal
85Rb (KED)	KED	0.03	3	0.1	Normal
88Sr (KED)	KED	0.03	3	0.1	Normal

Isotope	Mode	Dwell time (s)	# of Channels	Spacing	Resolution
107Ag (KED)	KED	0.03	3	0.1	Normal
114Cd (KED)	KED	0.03	3	0.1	Normal
133Cs (KED)	KED	0.03	3	0.1	Normal
138Ba (KED)	KED	0.03	3	0.1	Normal
139La (KED)	KED	0.03	3	0.1	Normal
140Ce (KED)	KED	0.03	3	0.1	Normal
141Pr (KED)	KED	0.03	3	0.1	Normal
142Nd (KED)	KED	0.03	3	0.1	Normal
152Sm (KED)	KED	0.03	3	0.1	Normal
153Eu (KED)	KED	0.03	3	0.1	Normal
158Gd (KED)	KED	0.03	3	0.1	Normal
164Dy (KED)	KED	0.03	3	0.1	Normal
165Ho (KED)	KED	0.03	3	0.1	Normal
166Er (KED)	KED	0.03	3	0.1	Normal
169Tm (KED)	KED	0.03	3	0.1	Normal
174Yb (KED)	KED	0.03	3	0.1	Normal
175Lu (KED)	KED	0.03	3	0.1	Normal
205Tl (KED)	KED	0.03	3	0.1	Normal
208Pb (KED)	KED	0.03	3	0.1	Normal
232Th (KED)	KED	0.03	3	0.1	Normal
238U (KED)	KED	0.03	3	0.1	Normal

No. of sweeps	Time per sweep[s]	Time per main run[s]
10	3.42	34.2

Calibration Curves:

9Be (KED)



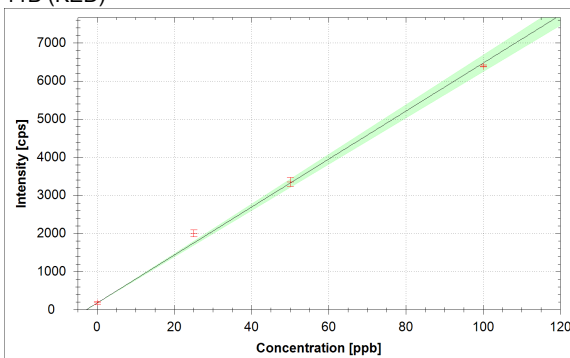
$$f(x) = 118.3741 \cdot x$$

$$R^2 = 0.9982$$

$$\text{BEC} = 0.000 \text{ ppb}$$

$$\text{LoD} = 0.0000 \text{ ppb}$$

11B (KED)



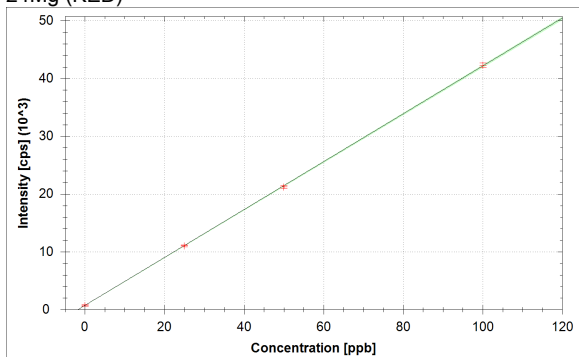
$$f(x) = 62.8886 \cdot x + 177.7797$$

$$R^2 = 0.9966$$

$$\text{BEC} = 2.827 \text{ ppb}$$

$$\text{LoD} = 2.2338 \text{ ppb}$$

24Mg (KED)



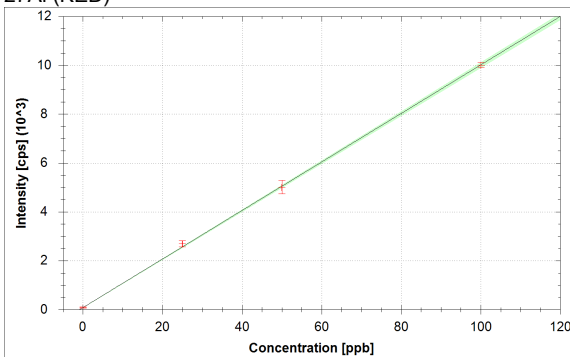
$$f(x) = 414.3832 \cdot x + 723.3589$$

$$R^2 = 0.9999$$

$$\text{BEC} = 1.746 \text{ ppb}$$

$$\text{LoD} = 0.9123 \text{ ppb}$$

27Al (KED)



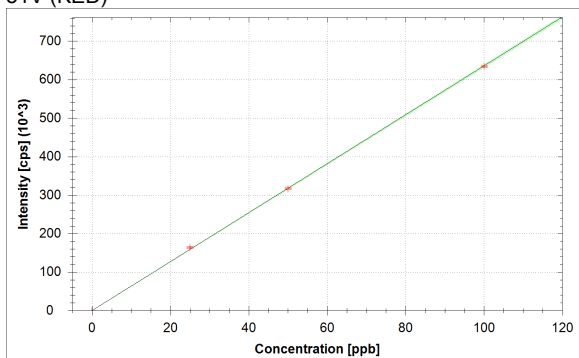
$$f(x) = 99.2837 \cdot x + 81.1115$$

$$R^2 = 0.9997$$

$$\text{BEC} = 0.817 \text{ ppb}$$

$$\text{LoD} = 0.8800 \text{ ppb}$$

51V (KED)



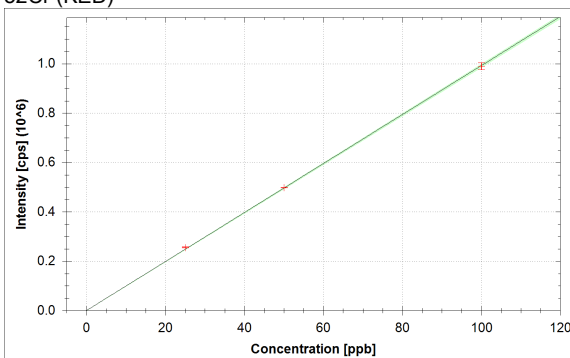
$$f(x) = 6355.9489 \cdot x + 2.2222$$

$$R^2 = 0.9999$$

$$\text{BEC} = 0.000 \text{ ppb}$$

$$\text{LoD} = 0.0009 \text{ ppb}$$

52Cr (KED)



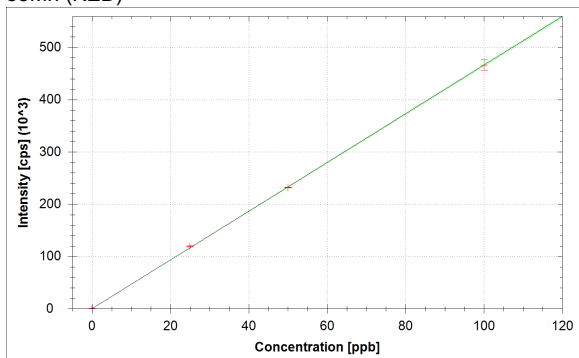
$$f(x) = 9925.6005 \cdot x + 212.2250$$

$$R^2 = 0.9999$$

$$\text{BEC} = 0.021 \text{ ppb}$$

$$\text{LoD} = 0.0219 \text{ ppb}$$

55Mn (KED)



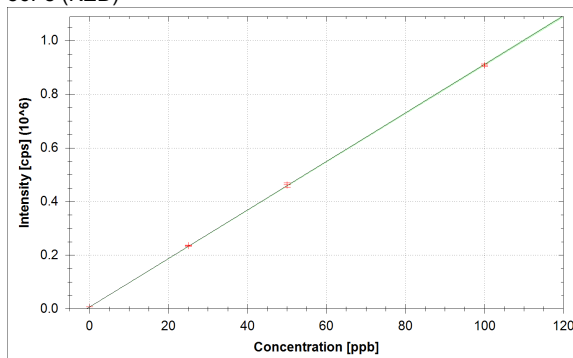
$$f(x) = 4658.6165 \cdot x + 194.4462$$

$$R^2 = 0.9999$$

$$\text{BEC} = 0.042 \text{ ppb}$$

$$\text{LoD} = 0.0126 \text{ ppb}$$

56Fe (KED)



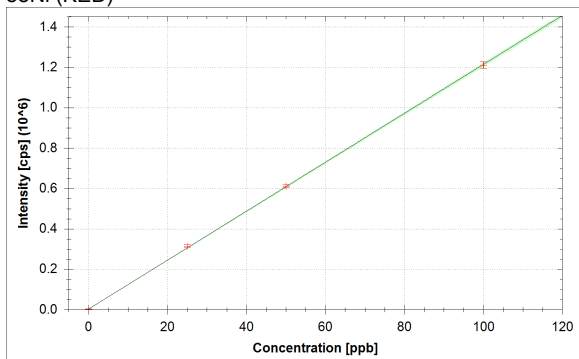
$$f(x) = 9045.2431 \cdot x + 6188.2127$$

$$R^2 = 1.0000$$

$$\text{BEC} = 0.684 \text{ ppb}$$

$$\text{LoD} = 0.0290 \text{ ppb}$$

58Ni (KED)



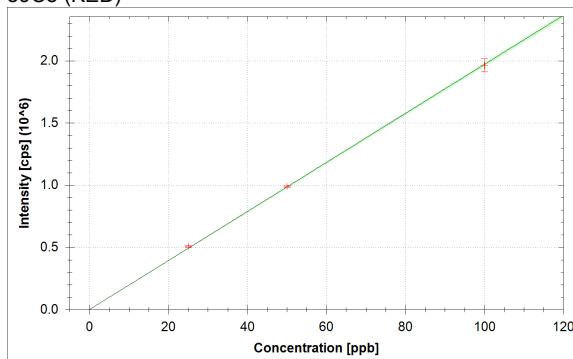
$$f(x) = 12117.1452 \cdot x + 2352.4469$$

$$R^2 = 0.9999$$

$$\text{BEC} = 0.194 \text{ ppb}$$

$$\text{LoD} = 0.0087 \text{ ppb}$$

59Co (KED)



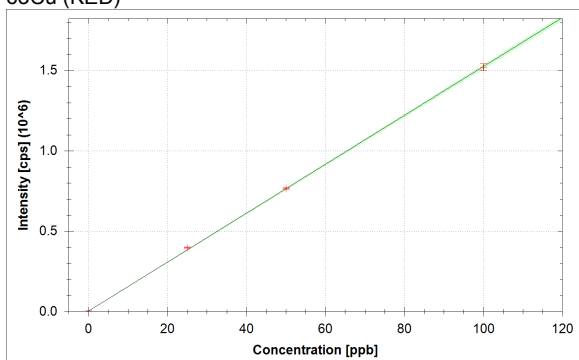
$$f(x) = 19704.4947 \cdot x + 12.2222$$

$$R^2 = 0.9998$$

$$\text{BEC} = 0.001 \text{ ppb}$$

$$\text{LoD} = 0.0012 \text{ ppb}$$

63Cu (KED)



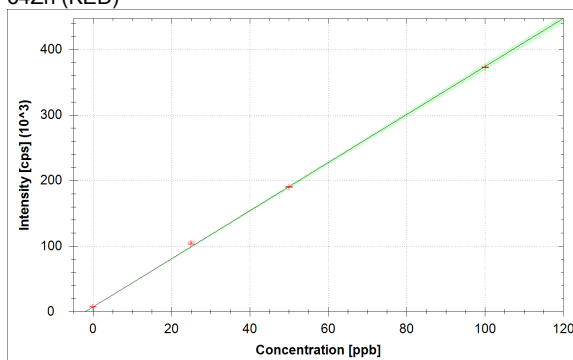
$$f(x) = 15218.4712 \cdot x + 3183.7459$$

$$R^2 = 0.9998$$

$$\text{BEC} = 0.209 \text{ ppb}$$

$$\text{LoD} = 0.0053 \text{ ppb}$$

64Zn (KED)



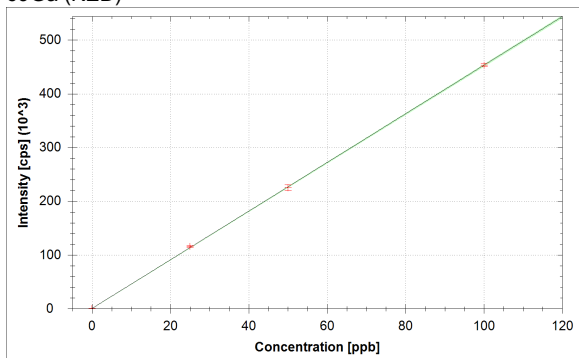
$$f(x) = 3669.3705 \cdot x + 7069.8304$$

$$R^2 = 0.9996$$

$$\text{BEC} = 1.927 \text{ ppb}$$

$$\text{LoD} = 0.3403 \text{ ppb}$$

69Ga (KED)



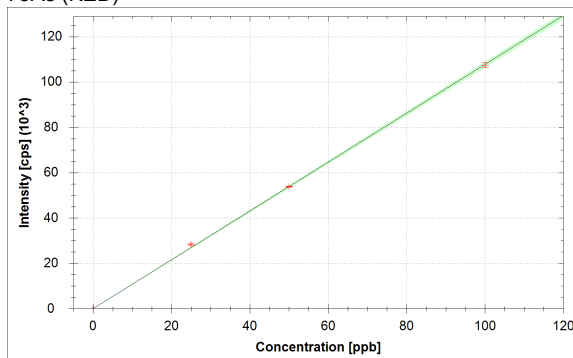
$$f(x) = 4525.6527 \cdot x + 577.8070$$

$$R^2 = 0.9999$$

$$\text{BEC} = 0.128 \text{ ppb}$$

$$\text{LoD} = 0.1525 \text{ ppb}$$

75As (KED)



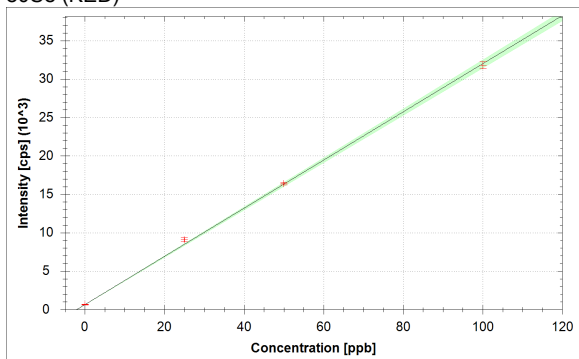
$$f(x) = 1077.0659 \cdot x + 22.2223$$

$$R^2 = 0.9997$$

$$\text{BEC} = 0.021 \text{ ppb}$$

$$\text{LoD} = 0.0054 \text{ ppb}$$

80Se (KED)



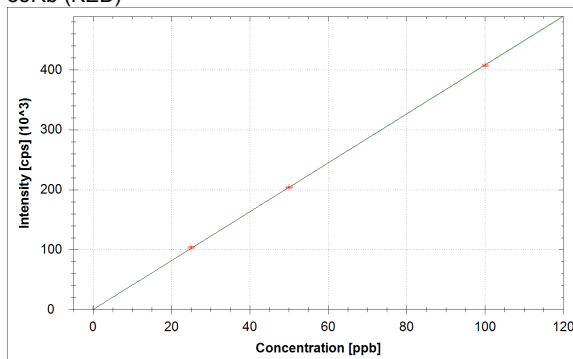
$$f(x) = 313.4548 \cdot x + 644.4620$$

$$R^2 = 0.9992$$

$$\text{BEC} = 2.056 \text{ ppb}$$

$$\text{LoD} = 0.4649 \text{ ppb}$$

85Rb (KED)



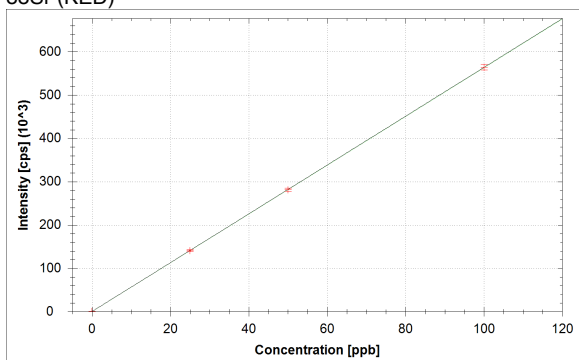
$$f(x) = 4079.7866 \cdot x + 58.8891$$

$$R^2 = 1.0000$$

$$\text{BEC} = 0.014 \text{ ppb}$$

$$\text{LoD} = 0.0163 \text{ ppb}$$

88Sr (KED)



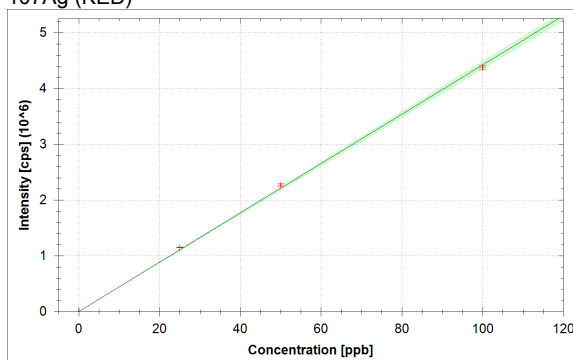
$$f(x) = 5636.5016 \cdot x + 211.1132$$

$$R^2 = 1.0000$$

$$\text{BEC} = 0.037 \text{ ppb}$$

$$\text{LoD} = 0.0101 \text{ ppb}$$

107Ag (KED)

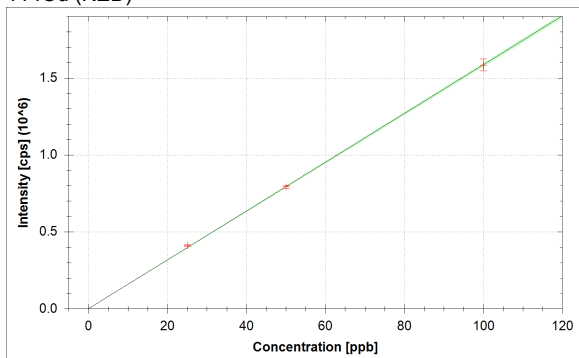


$$f(x) = 44205.3281 \cdot x + 174.4458$$

$$R^2 = 0.9993$$

$$\text{BEC} = 0.004 \text{ ppb}$$

$$\text{LoD} = 0.0007 \text{ ppb}$$

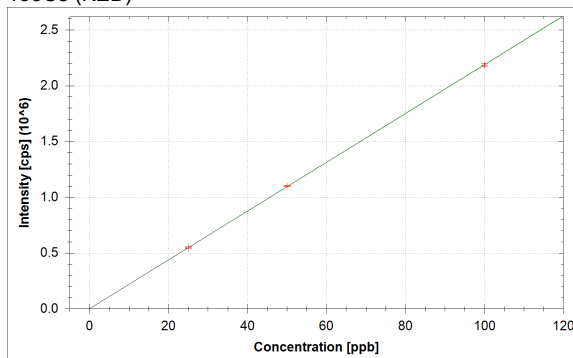
¹¹⁴Cd (KED)

$$f(x) = 15857.2242 \cdot x + 354.4501$$

$$R^2 = 0.9999$$

$$\text{BEC} = 0.022 \text{ ppb}$$

$$\text{LoD} = 0.0018 \text{ ppb}$$

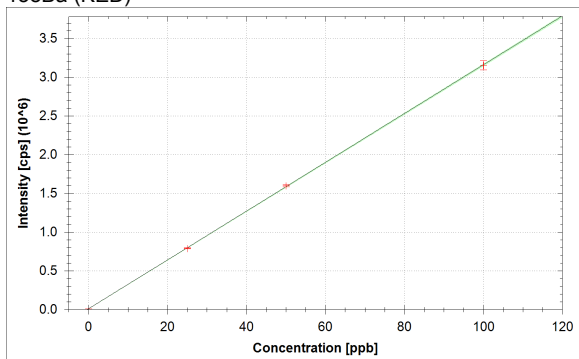
¹³³Cs (KED)

$$f(x) = 21876.4479 \cdot x + 15.5556$$

$$R^2 = 1.0000$$

$$\text{BEC} = 0.001 \text{ ppb}$$

$$\text{LoD} = 0.0011 \text{ ppb}$$

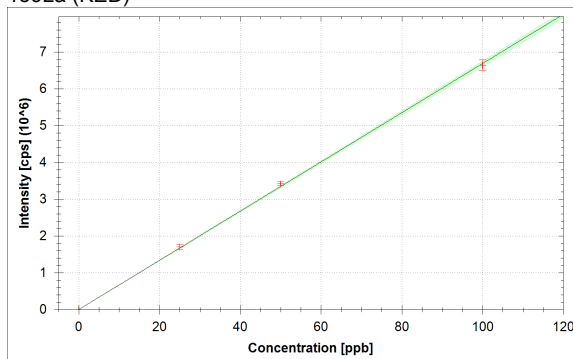
¹³⁸Ba (KED)

$$f(x) = 31511.0651 \cdot x + 10406.8222$$

$$R^2 = 0.9999$$

$$\text{BEC} = 0.330 \text{ ppb}$$

$$\text{LoD} = 0.0598 \text{ ppb}$$

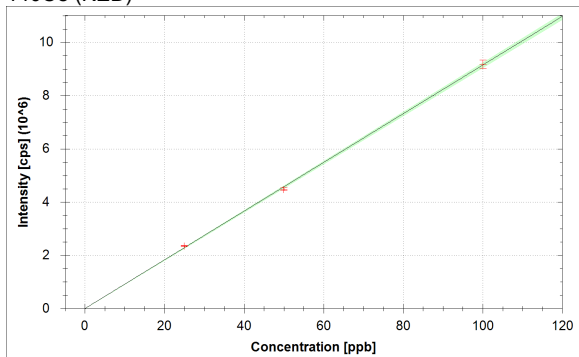
¹³⁹La (KED)

$$f(x) = 66882.7558 \cdot x + 43.3335$$

$$R^2 = 0.9996$$

$$\text{BEC} = 0.001 \text{ ppb}$$

$$\text{LoD} = 0.0003 \text{ ppb}$$

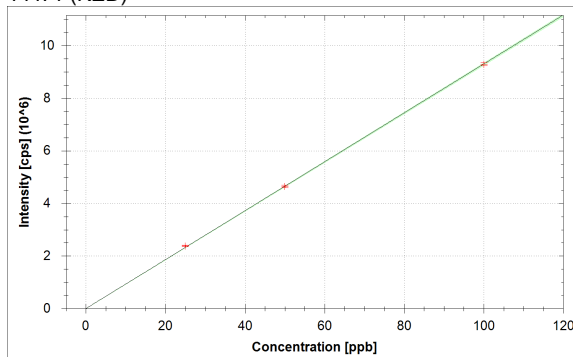
¹⁴⁰Ce (KED)

$$f(x) = 91479.8211 \cdot x + 128.8898$$

$$R^2 = 0.9997$$

$$\text{BEC} = 0.001 \text{ ppb}$$

$$\text{LoD} = 0.0006 \text{ ppb}$$

¹⁴¹Pr (KED)

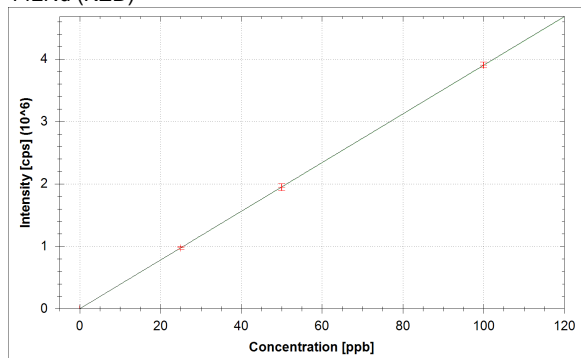
$$f(x) = 93032.9040 \cdot x + 26.6667$$

$$R^2 = 0.9999$$

$$\text{BEC} = 0.000 \text{ ppb}$$

$$\text{LoD} = 0.0005 \text{ ppb}$$

142Nd (KED)



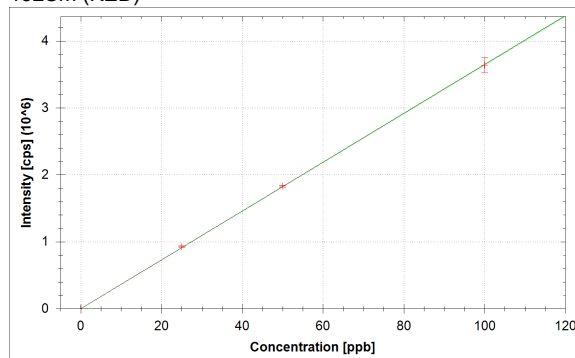
$$f(x) = 38999.9550 \cdot x + 40.0001$$

$$R^2 = 1.0000$$

$$\text{BEC} = 0.001 \text{ ppb}$$

$$\text{LoD} = 0.0016 \text{ ppb}$$

152Sm (KED)



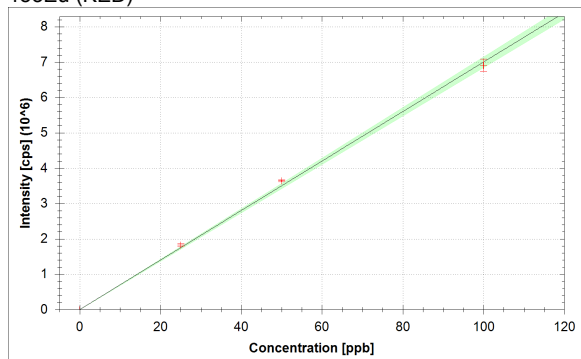
$$f(x) = 36462.5511 \cdot x + 2.2222$$

$$R^2 = 1.0000$$

$$\text{BEC} = 0.000 \text{ ppb}$$

$$\text{LoD} = 0.0003 \text{ ppb}$$

153Eu (KED)



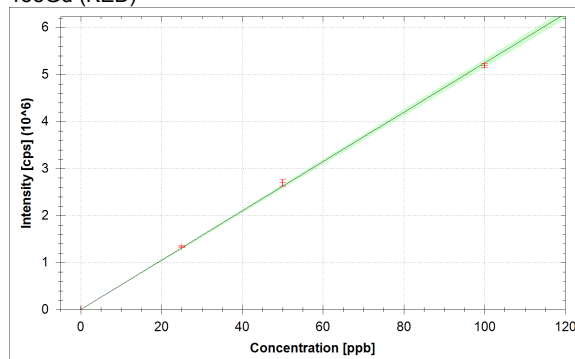
$$f(x) = 69998.1544 \cdot x + 2.2222$$

$$R^2 = 0.9987$$

$$\text{BEC} = 0.000 \text{ ppb}$$

$$\text{LoD} = 0.0001 \text{ ppb}$$

158Gd (KED)



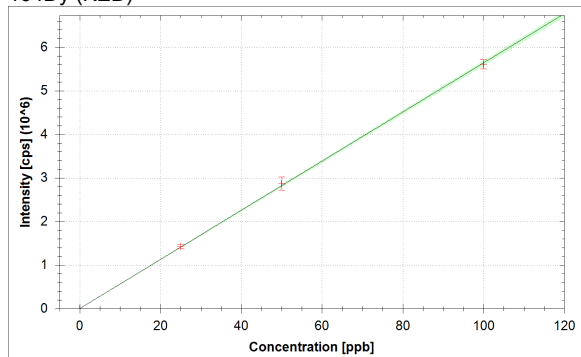
$$f(x) = 52456.0665 \cdot x + 2.2222$$

$$R^2 = 0.9994$$

$$\text{BEC} = 0.000 \text{ ppb}$$

$$\text{LoD} = 0.0002 \text{ ppb}$$

164Dy (KED)



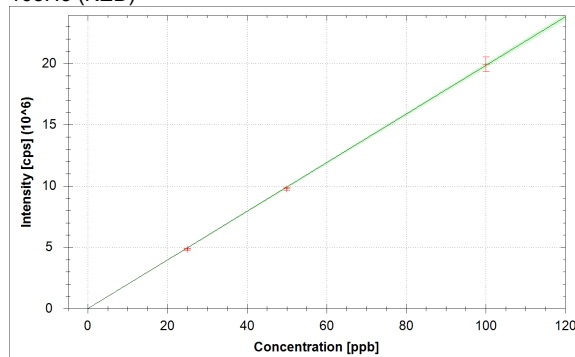
$$f(x) = 56400.6871 \cdot x + 17.7778$$

$$R^2 = 0.9998$$

$$\text{BEC} = 0.000 \text{ ppb}$$

$$\text{LoD} = 0.0004 \text{ ppb}$$

165Ho (KED)

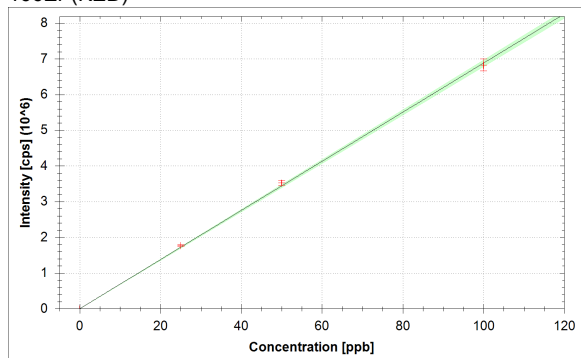


$$f(x) = 198333.7770 \cdot x + 4.4445$$

$$R^2 = 0.9998$$

$$\text{BEC} = 0.000 \text{ ppb}$$

$$\text{LoD} = 0.0001 \text{ ppb}$$

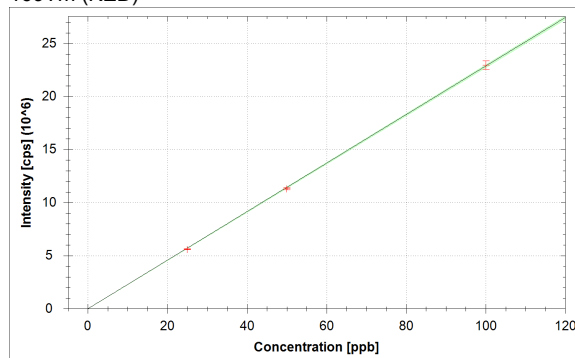
¹⁶⁶Er (KED)

$$f(x) = 68791.3780 \cdot x + 245.5590$$

$$R^2 = 0.9995$$

$$\text{BEC} = 0.004 \text{ ppb}$$

$$\text{LoD} = 0.0034 \text{ ppb}$$

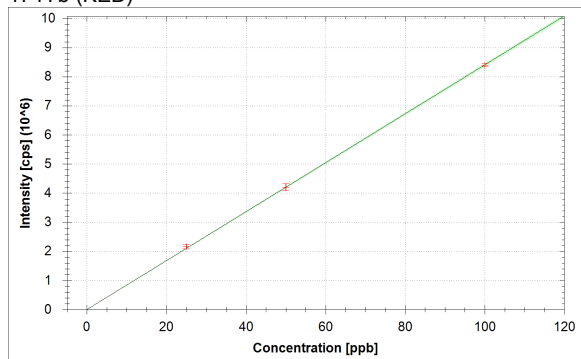
¹⁶⁹Tm (KED)

$$f(x) = 228638.3914 \cdot x + 1.1111$$

$$R^2 = 0.9999$$

$$\text{BEC} = 0.000 \text{ ppb}$$

$$\text{LoD} = 0.0000 \text{ ppb}$$

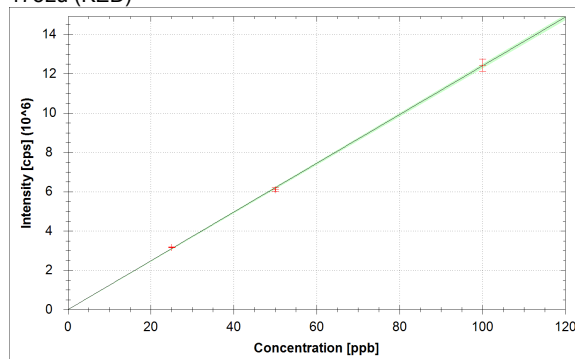
¹⁷⁴Yb (KED)

$$f(x) = 84044.4356 \cdot x + 2.2222$$

$$R^2 = 0.9999$$

$$\text{BEC} = 0.000 \text{ ppb}$$

$$\text{LoD} = 0.0001 \text{ ppb}$$

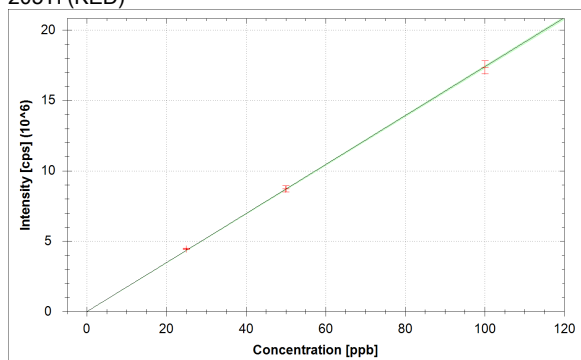
¹⁷⁵Lu (KED)

$$f(x) = 124006.4492 \cdot x$$

$$R^2 = 0.9998$$

$$\text{BEC} = 0.000 \text{ ppb}$$

$$\text{LoD} = 0.0000 \text{ ppb}$$

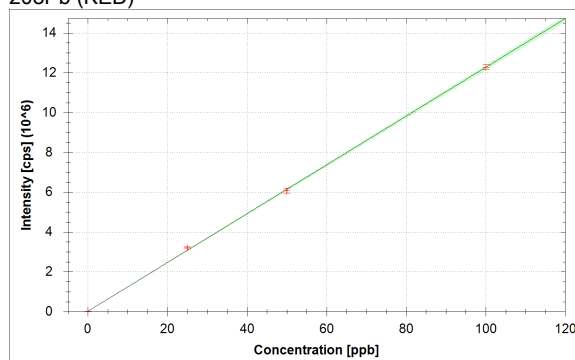
²⁰⁵Tl (KED)

$$f(x) = 173946.9804 \cdot x + 6.6667$$

$$R^2 = 0.9999$$

$$\text{BEC} = 0.000 \text{ ppb}$$

$$\text{LoD} = 0.0001 \text{ ppb}$$

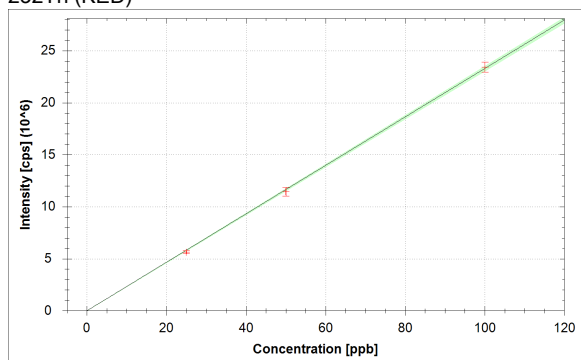
²⁰⁸Pb (KED)

$$f(x) = 122586.5725 \cdot x + 13839.9282$$

$$R^2 = 0.9997$$

$$\text{BEC} = 0.113 \text{ ppb}$$

$$\text{LoD} = 0.0042 \text{ ppb}$$

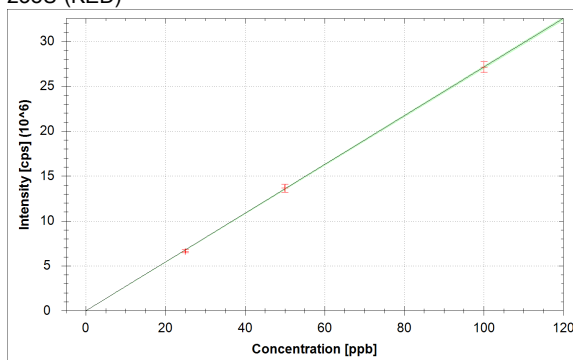
²³²Th (KED)

$$f(x) = 232882.1490 \cdot x + 218.8911$$

$$R^2 = 0.9997$$

$$\text{BEC} = 0.001 \text{ ppb}$$

$$\text{LoD} = 0.0000 \text{ ppb}$$

²³⁸U (KED)

$$f(x) = 271167.6352 \cdot x + 70.0003$$

$$R^2 = 0.9999$$

$$\text{BEC} = 0.000 \text{ ppb}$$

$$\text{LoD} = 0.0001 \text{ ppb}$$

Standards:

Analysis Index: 3
 Analysis Name: std1
 Analysis Type: STD
 Analysis Started at: 8/31/2021 4:16:56 PM
 Standard (Stock): std1
 Standard DF: 1

Category	Concentration average	Concentration RSD	Standard Concentration
9Be (KED)	26.802 ppb	1.3 %	25.000 ppb
11B (KED)	28.978 ppb	4.9 %	25.000 ppb
24Mg (KED)	24.820 ppb	1.5 %	25.000 ppb
27Al (KED)	26.269 ppb	4.7 %	25.000 ppb
51V (KED)	25.779 ppb	1.5 %	25.000 ppb
52Cr (KED)	25.782 ppb	0.9 %	25.000 ppb
55Mn (KED)	25.605 ppb	1.3 %	25.000 ppb
56Fe (KED)	25.309 ppb	0.7 %	25.000 ppb
58Ni (KED)	25.772 ppb	2.2 %	25.000 ppb
59Co (KED)	25.813 ppb	1.6 %	25.000 ppb
63Cu (KED)	25.946 ppb	1.0 %	25.000 ppb
64Zn (KED)	26.501 ppb	1.7 %	25.000 ppb
69Ga (KED)	25.481 ppb	1.5 %	25.000 ppb
75As (KED)	26.326 ppb	1.8 %	25.000 ppb
80Se (KED)	26.947 ppb	3.1 %	25.000 ppb
85Rb (KED)	25.335 ppb	2.2 %	25.000 ppb
88Sr (KED)	24.937 ppb	1.8 %	25.000 ppb
107Ag (KED)	25.967 ppb	0.7 %	25.000 ppb
114Cd (KED)	25.855 ppb	1.1 %	25.000 ppb
133Cs (KED)	25.096 ppb	1.1 %	25.000 ppb
138Ba (KED)	24.766 ppb	1.1 %	25.000 ppb
139La (KED)	25.425 ppb	3.8 %	25.000 ppb
140Ce (KED)	25.696 ppb	0.9 %	25.000 ppb
141Pr (KED)	25.627 ppb	1.1 %	25.000 ppb
142Nd (KED)	25.009 ppb	2.6 %	25.000 ppb
152Sm (KED)	25.406 ppb	1.1 %	25.000 ppb
153Eu (KED)	26.089 ppb	1.9 %	25.000 ppb
158Gd (KED)	25.573 ppb	1.7 %	25.000 ppb
164Dy (KED)	25.386 ppb	3.1 %	25.000 ppb
165Ho (KED)	24.412 ppb	1.8 %	25.000 ppb
166Er (KED)	25.706 ppb	1.6 %	25.000 ppb
169Tm (KED)	24.515 ppb	0.8 %	25.000 ppb
174Yb (KED)	25.784 ppb	3.8 %	25.000 ppb
175Lu (KED)	25.557 ppb	0.5 %	25.000 ppb
205Tl (KED)	25.652 ppb	1.1 %	25.000 ppb
208Pb (KED)	26.028 ppb	1.6 %	25.000 ppb
232Th (KED)	24.240 ppb	2.4 %	25.000 ppb
238U (KED)	24.357 ppb	2.8 %	25.000 ppb

Standards:

Analysis Index: 4
 Analysis Name: std2
 Analysis Type: STD
 Analysis Started at: 8/31/2021 4:20:09 PM
 Standard (Stock): std2
 Standard DF: 1

Category	Concentration average	Concentration RSD	Standard Concentration
9Be (KED)	52.004 ppb	0.4 %	50.000 ppb
11B (KED)	50.467 ppb	3.9 %	50.000 ppb
24Mg (KED)	49.485 ppb	1.2 %	50.000 ppb
27Al (KED)	49.632 ppb	5.5 %	50.000 ppb
51V (KED)	49.889 ppb	1.0 %	50.000 ppb
52Cr (KED)	50.169 ppb	0.2 %	50.000 ppb
55Mn (KED)	49.682 ppb	0.3 %	50.000 ppb
56Fe (KED)	50.315 ppb	1.8 %	50.000 ppb
58Ni (KED)	50.279 ppb	1.3 %	50.000 ppb
59Co (KED)	50.248 ppb	0.8 %	50.000 ppb
63Cu (KED)	50.138 ppb	0.6 %	50.000 ppb
64Zn (KED)	49.854 ppb	0.6 %	50.000 ppb
69Ga (KED)	49.671 ppb	2.4 %	50.000 ppb
75As (KED)	49.879 ppb	0.3 %	50.000 ppb
80Se (KED)	50.256 ppb	1.1 %	50.000 ppb
85Rb (KED)	49.990 ppb	0.8 %	50.000 ppb
88Sr (KED)	49.884 ppb	1.3 %	50.000 ppb
107Ag (KED)	51.331 ppb	1.3 %	50.000 ppb
114Cd (KED)	49.899 ppb	1.3 %	50.000 ppb
133Cs (KED)	50.251 ppb	0.5 %	50.000 ppb
138Ba (KED)	50.485 ppb	1.0 %	50.000 ppb
139La (KED)	51.185 ppb	1.3 %	50.000 ppb
140Ce (KED)	48.975 ppb	1.1 %	50.000 ppb
141Pr (KED)	49.924 ppb	1.1 %	50.000 ppb
142Nd (KED)	49.874 ppb	2.8 %	50.000 ppb
152Sm (KED)	50.201 ppb	0.7 %	50.000 ppb
153Eu (KED)	52.018 ppb	0.8 %	50.000 ppb
158Gd (KED)	51.520 ppb	2.7 %	50.000 ppb
164Dy (KED)	50.903 ppb	5.2 %	50.000 ppb
165Ho (KED)	49.284 ppb	1.2 %	50.000 ppb
166Er (KED)	51.248 ppb	2.0 %	50.000 ppb
169Tm (KED)	49.464 ppb	1.0 %	50.000 ppb
174Yb (KED)	49.920 ppb	2.9 %	50.000 ppb
175Lu (KED)	49.191 ppb	1.7 %	50.000 ppb
205Tl (KED)	50.102 ppb	2.4 %	50.000 ppb
208Pb (KED)	49.432 ppb	2.1 %	50.000 ppb
232Th (KED)	49.195 ppb	3.7 %	50.000 ppb
238U (KED)	50.301 ppb	3.2 %	50.000 ppb

Standards:

Analysis Index: 5
 Analysis Name: std3
 Analysis Type: STD
 Analysis Started at: 8/31/2021 4:23:16 PM
 Standard (Stock): std3
 Standard DF: 1

Category	Concentration average	Concentration RSD	Standard Concentration
9Be (KED)	98.547 ppb	1.5 %	100.000 ppb
11B (KED)	98.772 ppb	0.4 %	100.000 ppb
24Mg (KED)	100.303 ppb	0.9 %	100.000 ppb
27Al (KED)	99.867 ppb	1.1 %	100.000 ppb
51V (KED)	99.861 ppb	0.5 %	100.000 ppb
52Cr (KED)	99.720 ppb	1.4 %	100.000 ppb
55Mn (KED)	100.008 ppb	2.2 %	100.000 ppb
56Fe (KED)	99.765 ppb	0.5 %	100.000 ppb
58Ni (KED)	99.668 ppb	1.3 %	100.000 ppb
59Co (KED)	99.673 ppb	2.7 %	100.000 ppb
63Cu (KED)	99.695 ppb	1.3 %	100.000 ppb
64Zn (KED)	99.698 ppb	0.2 %	100.000 ppb
69Ga (KED)	100.044 ppb	0.7 %	100.000 ppb
75As (KED)	99.729 ppb	1.2 %	100.000 ppb
80Se (KED)	99.385 ppb	1.5 %	100.000 ppb
85Rb (KED)	99.921 ppb	0.5 %	100.000 ppb
88Sr (KED)	100.074 ppb	1.2 %	100.000 ppb
107Ag (KED)	99.093 ppb	0.8 %	100.000 ppb
114Cd (KED)	99.837 ppb	2.5 %	100.000 ppb
133Cs (KED)	99.851 ppb	0.7 %	100.000 ppb
138Ba (KED)	99.816 ppb	1.9 %	100.000 ppb
139La (KED)	99.302 ppb	2.3 %	100.000 ppb
140Ce (KED)	100.339 ppb	1.7 %	100.000 ppb
141Pr (KED)	99.881 ppb	0.7 %	100.000 ppb
142Nd (KED)	100.061 ppb	1.2 %	100.000 ppb
152Sm (KED)	99.798 ppb	3.1 %	100.000 ppb
153Eu (KED)	98.719 ppb	2.6 %	100.000 ppb
158Gd (KED)	99.097 ppb	0.8 %	100.000 ppb
164Dy (KED)	99.452 ppb	2.0 %	100.000 ppb
165Ho (KED)	100.505 ppb	3.0 %	100.000 ppb
166Er (KED)	99.200 ppb	2.5 %	100.000 ppb
169Tm (KED)	100.389 ppb	1.7 %	100.000 ppb
174Yb (KED)	99.844 ppb	0.7 %	100.000 ppb
175Lu (KED)	100.265 ppb	2.5 %	100.000 ppb
205Tl (KED)	99.786 ppb	2.7 %	100.000 ppb
208Pb (KED)	100.027 ppb	1.0 %	100.000 ppb
232Th (KED)	100.593 ppb	2.1 %	100.000 ppb
238U (KED)	100.010 ppb	2.1 %	100.000 ppb

Sample List Summary:

Instrument ID: iCAP Q

Index:	Label:	Main Runs:	Survey Runs:	Start Time:	User name:
1	water	3	0	8/31/2021 4:11:06 PM	WINDOWS-UPC14ER\Administrator
2	blk	3	0	8/31/2021 4:13:50 PM	WINDOWS-UPC14ER\Administrator
3	std1	3	0	8/31/2021 4:16:56 PM	WINDOWS-UPC14ER\Administrator
4	std2	3	0	8/31/2021 4:20:09 PM	WINDOWS-UPC14ER\Administrator
5	std3	3	0	8/31/2021 4:23:16 PM	WINDOWS-UPC14ER\Administrator
6	18110jian	3	0	8/31/2021 4:26:30 PM	WINDOWS-UPC14ER\Administrator
7	17426jian	3	0	8/31/2021 4:29:36 PM	WINDOWS-UPC14ER\Administrator
8	18052jian	3	0	8/31/2021 4:32:39 PM	WINDOWS-UPC14ER\Administrator
9	18062jian	3	0	8/31/2021 4:35:50 PM	WINDOWS-UPC14ER\Administrator
10	17196jian	3	0	8/31/2021 4:38:58 PM	WINDOWS-UPC14ER\Administrator
11	17640jian	3	0	8/31/2021 4:42:11 PM	WINDOWS-UPC14ER\Administrator
12	296jian	3	0	8/31/2021 4:45:24 PM	WINDOWS-UPC14ER\Administrator
13	292jian	3	0	8/31/2021 4:48:36 PM	WINDOWS-UPC14ER\Administrator
14	286jian	3	0	8/31/2021 4:52:01 PM	WINDOWS-UPC14ER\Administrator
15	300jian	3	0	8/31/2021 4:55:10 PM	WINDOWS-UPC14ER\Administrator
16	298jian	3	0	8/31/2021 4:58:28 PM	WINDOWS-UPC14ER\Administrator
17	17020jian	3	0	8/31/2021 5:01:36 PM	WINDOWS-UPC14ER\Administrator
18	288jian	3	0	8/31/2021 5:04:40 PM	WINDOWS-UPC14ER\Administrator
19	282jian	3	0	8/31/2021 5:08:00 PM	WINDOWS-UPC14ER\Administrator
20	17013jian	3	0	8/31/2021 5:11:29 PM	WINDOWS-UPC14ER\Administrator
21	284jian	3	0	8/31/2021 5:14:49 PM	WINDOWS-UPC14ER\Administrator
22	294jian	3	0	8/31/2021 5:18:34 PM	WINDOWS-UPC14ER\Administrator
23	316jian	3	0	8/31/2021 5:22:03 PM	WINDOWS-UPC14ER\Administrator
24	308jian	3	0	8/31/2021 5:25:37 PM	WINDOWS-UPC14ER\Administrator
25	302jian	3	0	8/31/2021 5:29:04 PM	WINDOWS-UPC14ER\Administrator

Sample Summary

Instrument ID: iCAP Q

Analysis index: 1

Analysis name: water

Analysis started at: 8/31/2021 4:11:06 PM

User name: WINDOWS-UPCI4ER\Administrator

Category	Concentration average	Concentration RSD
9Be (KED)	0.000 ppb	
11B (KED)	-2.721 ppb	1.9 %
24Mg (KED)	-1.574 ppb	0.8 %
27Al (KED)	-0.772 ppb	2.5 %
51V (KED)	0.001 ppb	0.0 %
52Cr (KED)	-0.016 ppb	10.5 %
55Mn (KED)	-0.019 ppb	34.0 %
56Fe (KED)	-0.647 ppb	0.1 %
58Ni (KED)	-0.093 ppb	4.9 %
59Co (KED)	0.000 ppb	158.7 %
63Cu (KED)	-0.196 ppb	0.9 %
64Zn (KED)	-1.814 ppb	0.6 %
69Ga (KED)	-0.122 ppb	2.5 %
75As (KED)	-0.008 ppb	99.2 %
80Se (KED)	0.060 ppb	153.8 %
85Rb (KED)	-0.013 ppb	15.1 %
88Sr (KED)	-0.035 ppb	2.0 %
107Ag (KED)	-0.004 ppb	1.2 %
114Cd (KED)	-0.022 ppb	1.1 %
133Cs (KED)	-0.001 ppb	27.3 %
138Ba (KED)	-0.322 ppb	0.6 %
139La (KED)	-0.001 ppb	4.6 %
140Ce (KED)	-0.001 ppb	
141Pr (KED)	0.000 ppb	24.7 %
142Nd (KED)	-0.001 ppb	0.0 %
152Sm (KED)	0.000 ppb	0.0 %
153Eu (KED)	0.000 ppb	0.0 %
158Gd (KED)	0.000 ppb	0.0 %
164Dy (KED)	0.000 ppb	0.0 %
165Ho (KED)	0.000 ppb	0.0 %
166Er (KED)	-0.004 ppb	0.8 %
169Tm (KED)	0.000 ppb	0.0 %
174Yb (KED)	0.000 ppb	0.0 %
175Lu (KED)	0.000 ppb	
205Tl (KED)	0.000 ppb	89.2 %
208Pb (KED)	-0.112 ppb	0.2 %
232Th (KED)	-0.001 ppb	1.8 %
238U (KED)	0.000 ppb	2.8 %

Category	Concentration average	Intensity average	Intensity RSD
9Be (KED)	0.000 ppb	0 cps	
11B (KED)	-2.721 ppb	7 cps	50.0 %
24Mg (KED)	-1.574 ppb	71 cps	7.2 %
27Al (KED)	-0.772 ppb	4 cps	43.3 %
51V (KED)	0.001 ppb	7 cps	0.0 %
52Cr (KED)	-0.016 ppb	53 cps	31.3 %
55Mn (KED)	-0.019 ppb	106 cps	28.7 %
56Fe (KED)	-0.647 ppb	339 cps	2.5 %
58Ni (KED)	-0.093 ppb	1,227 cps	4.5 %
59Co (KED)	0.000 ppb	7 cps	132.3 %

Category	Concentration average	Intensity average	Intensity RSD
63Cu (KED)	-0.196 ppb	198 cps	12.9 %
64Zn (KED)	-1.814 ppb	414 cps	9.5 %
69Ga (KED)	-0.122 ppb	24 cps	56.8 %
75As (KED)	-0.008 ppb	13 cps	66.1 %
80Se (KED)	0.060 ppb	663 cps	4.4 %
85Rb (KED)	-0.013 ppb	8 cps	99.0 %
88Sr (KED)	-0.035 ppb	16 cps	24.7 %
107Ag (KED)	-0.004 ppb	11 cps	17.3 %
114Cd (KED)	-0.022 ppb	6 cps	69.3 %
133Cs (KED)	-0.001 ppb	3 cps	100.0 %
138Ba (KED)	-0.322 ppb	264 cps	22.2 %
139La (KED)	-0.001 ppb	1 cps	173.2 %
140Ce (KED)	-0.001 ppb	0 cps	
141Pr (KED)	0.000 ppb	3 cps	173.2 %
142Nd (KED)	-0.001 ppb	0 cps	
152Sm (KED)	0.000 ppb	0 cps	
153Eu (KED)	0.000 ppb	0 cps	
158Gd (KED)	0.000 ppb	0 cps	
164Dy (KED)	0.000 ppb	0 cps	
165Ho (KED)	0.000 ppb	0 cps	
166Er (KED)	-0.004 ppb	1 cps	173.2 %
169Tm (KED)	0.000 ppb	0 cps	
174Yb (KED)	0.000 ppb	0 cps	
175Lu (KED)	0.000 ppb	0 cps	
205Tl (KED)	0.000 ppb	14 cps	48.0 %
208Pb (KED)	-0.112 ppb	112 cps	27.6 %
232Th (KED)	-0.001 ppb	2 cps	173.2 %
238U (KED)	0.000 ppb	2 cps	86.6 %

Sample Summary

Instrument ID: iCAP Q

Analysis index: 2

Analysis name: blk

Analysis started at: 8/31/2021 4:13:50 PM

User name: WINDOWS-UPCI4ER\Administrator

Category	Concentration average	Concentration RSD
9Be (KED)	0.000 ppb	
11B (KED)	0.000 ppb	26.3 %
24Mg (KED)	0.000 ppb	17.4 %
27Al (KED)	0.000 ppb	35.9 %
51V (KED)	0.000 ppb	86.6 %
52Cr (KED)	0.000 ppb	34.2 %
55Mn (KED)	0.000 ppb	10.0 %
56Fe (KED)	0.000 ppb	1.4 %
58Ni (KED)	0.000 ppb	1.5 %
59Co (KED)	0.000 ppb	63.0 %
63Cu (KED)	0.000 ppb	0.8 %
64Zn (KED)	0.000 ppb	5.9 %
69Ga (KED)	0.000 ppb	39.8 %
75As (KED)	0.000 ppb	8.7 %
80Se (KED)	0.000 ppb	7.5 %
85Rb (KED)	0.000 ppb	37.7 %
88Sr (KED)	0.000 ppb	9.0 %
107Ag (KED)	0.000 ppb	5.8 %
114Cd (KED)	0.000 ppb	2.7 %
133Cs (KED)	0.000 ppb	49.5 %
138Ba (KED)	0.000 ppb	6.0 %
139La (KED)	0.000 ppb	15.4 %
140Ce (KED)	0.000 ppb	14.7 %
141Pr (KED)	0.000 ppb	54.5 %
142Nd (KED)	0.000 ppb	50.7 %
152Sm (KED)	0.000 ppb	173.2 %
153Eu (KED)	0.000 ppb	86.6 %
158Gd (KED)	0.000 ppb	173.2 %
164Dy (KED)	0.000 ppb	47.2 %
165Ho (KED)	0.000 ppb	114.6 %
166Er (KED)	0.000 ppb	31.8 %
169Tm (KED)	0.000 ppb	173.2 %
174Yb (KED)	0.000 ppb	86.6 %
175Lu (KED)	0.000 ppb	
205Tl (KED)	0.000 ppb	50.0 %
208Pb (KED)	0.000 ppb	1.2 %
232Th (KED)	0.000 ppb	1.8 %
238U (KED)	0.000 ppb	12.6 %

Category	Concentration average	Intensity average	Intensity RSD
9Be (KED)	0.000 ppb	0 cps	
11B (KED)	0.000 ppb	178 cps	26.3 %
24Mg (KED)	0.000 ppb	723 cps	17.4 %
27Al (KED)	0.000 ppb	81 cps	35.9 %
51V (KED)	0.000 ppb	2 cps	86.6 %
52Cr (KED)	0.000 ppb	212 cps	34.2 %
55Mn (KED)	0.000 ppb	194 cps	10.0 %
56Fe (KED)	0.000 ppb	6,188 cps	1.4 %
58Ni (KED)	0.000 ppb	2,352 cps	1.5 %
59Co (KED)	0.000 ppb	12 cps	63.0 %

Category	Concentration average	Intensity average	Intensity RSD
63Cu (KED)	0.000 ppb	3,184 cps	0.8 %
64Zn (KED)	0.000 ppb	7,070 cps	5.9 %
69Ga (KED)	0.000 ppb	578 cps	39.8 %
75As (KED)	0.000 ppb	22 cps	8.7 %
80Se (KED)	0.000 ppb	644 cps	7.5 %
85Rb (KED)	0.000 ppb	59 cps	37.7 %
88Sr (KED)	0.000 ppb	211 cps	9.0 %
107Ag (KED)	0.000 ppb	174 cps	5.8 %
114Cd (KED)	0.000 ppb	354 cps	2.7 %
133Cs (KED)	0.000 ppb	16 cps	49.5 %
138Ba (KED)	0.000 ppb	10,407 cps	6.0 %
139La (KED)	0.000 ppb	43 cps	15.4 %
140Ce (KED)	0.000 ppb	129 cps	14.7 %
141Pr (KED)	0.000 ppb	27 cps	54.5 %
142Nd (KED)	0.000 ppb	40 cps	50.7 %
152Sm (KED)	0.000 ppb	2 cps	173.2 %
153Eu (KED)	0.000 ppb	2 cps	86.6 %
158Gd (KED)	0.000 ppb	2 cps	173.2 %
164Dy (KED)	0.000 ppb	18 cps	47.2 %
165Ho (KED)	0.000 ppb	4 cps	114.6 %
166Er (KED)	0.000 ppb	246 cps	31.8 %
169Tm (KED)	0.000 ppb	1 cps	173.2 %
174Yb (KED)	0.000 ppb	2 cps	86.6 %
175Lu (KED)	0.000 ppb	0 cps	
205Tl (KED)	0.000 ppb	7 cps	50.0 %
208Pb (KED)	0.000 ppb	13,840 cps	1.2 %
232Th (KED)	0.000 ppb	219 cps	1.8 %
238U (KED)	0.000 ppb	70 cps	12.6 %

Sample Summary

Instrument ID: iCAP Q

Analysis index: 3

Analysis name: std1

Analysis started at: 8/31/2021 4:16:56 PM

User name: WINDOWS-UPCI4ER\Administrator

Category	Concentration average	Concentration RSD
9Be (KED)	26.802 ppb	1.3 %
11B (KED)	28.978 ppb	4.9 %
24Mg (KED)	24.820 ppb	1.5 %
27Al (KED)	26.269 ppb	4.7 %
51V (KED)	25.779 ppb	1.5 %
52Cr (KED)	25.782 ppb	0.9 %
55Mn (KED)	25.605 ppb	1.3 %
56Fe (KED)	25.309 ppb	0.7 %
58Ni (KED)	25.772 ppb	2.2 %
59Co (KED)	25.813 ppb	1.6 %
63Cu (KED)	25.946 ppb	1.0 %
64Zn (KED)	26.501 ppb	1.7 %
69Ga (KED)	25.481 ppb	1.5 %
75As (KED)	26.326 ppb	1.8 %
80Se (KED)	26.947 ppb	3.1 %
85Rb (KED)	25.335 ppb	2.2 %
88Sr (KED)	24.937 ppb	1.8 %
107Ag (KED)	25.967 ppb	0.7 %
114Cd (KED)	25.855 ppb	1.1 %
133Cs (KED)	25.096 ppb	1.1 %
138Ba (KED)	24.766 ppb	1.1 %
139La (KED)	25.425 ppb	3.8 %
140Ce (KED)	25.696 ppb	0.9 %
141Pr (KED)	25.627 ppb	1.1 %
142Nd (KED)	25.009 ppb	2.6 %
152Sm (KED)	25.406 ppb	1.1 %
153Eu (KED)	26.089 ppb	1.9 %
158Gd (KED)	25.573 ppb	1.7 %
164Dy (KED)	25.386 ppb	3.1 %
165Ho (KED)	24.412 ppb	1.8 %
166Er (KED)	25.706 ppb	1.6 %
169Tm (KED)	24.515 ppb	0.8 %
174Yb (KED)	25.784 ppb	3.8 %
175Lu (KED)	25.557 ppb	0.5 %
205Tl (KED)	25.652 ppb	1.1 %
208Pb (KED)	26.028 ppb	1.6 %
232Th (KED)	24.240 ppb	2.4 %
238U (KED)	24.357 ppb	2.8 %

Category	Concentration average	Intensity average	Intensity RSD
9Be (KED)	26.802 ppb	3,173 cps	1.3 %
11B (KED)	28.978 ppb	2,000 cps	4.4 %
24Mg (KED)	24.820 ppb	11,008 cps	1.4 %
27Al (KED)	26.269 ppb	2,689 cps	4.5 %
51V (KED)	25.779 ppb	163,854 cps	1.5 %
52Cr (KED)	25.782 ppb	256,110 cps	0.9 %
55Mn (KED)	25.605 ppb	119,478 cps	1.3 %
56Fe (KED)	25.309 ppb	235,113 cps	0.7 %
58Ni (KED)	25.772 ppb	314,634 cps	2.1 %
59Co (KED)	25.813 ppb	508,639 cps	1.6 %

Category	Concentration average	Intensity average	Intensity RSD
63Cu (KED)	25.946 ppb	398,050 cps	1.0 %
64Zn (KED)	26.501 ppb	104,313 cps	1.6 %
69Ga (KED)	25.481 ppb	115,895 cps	1.5 %
75As (KED)	26.326 ppb	28,377 cps	1.8 %
80Se (KED)	26.947 ppb	9,091 cps	2.8 %
85Rb (KED)	25.335 ppb	103,421 cps	2.1 %
88Sr (KED)	24.937 ppb	140,770 cps	1.8 %
107Ag (KED)	25.967 ppb	1,148,061 cps	0.7 %
114Cd (KED)	25.855 ppb	410,349 cps	1.1 %
133Cs (KED)	25.096 ppb	549,024 cps	1.1 %
138Ba (KED)	24.766 ppb	790,816 cps	1.1 %
139La (KED)	25.425 ppb	1,700,507 cps	3.8 %
140Ce (KED)	25.696 ppb	2,350,812 cps	0.9 %
141Pr (KED)	25.627 ppb	2,384,218 cps	1.1 %
142Nd (KED)	25.009 ppb	975,404 cps	2.6 %
152Sm (KED)	25.406 ppb	926,365 cps	1.1 %
153Eu (KED)	26.089 ppb	1,826,191 cps	1.9 %
158Gd (KED)	25.573 ppb	1,341,468 cps	1.7 %
164Dy (KED)	25.386 ppb	1,431,829 cps	3.1 %
165Ho (KED)	24.412 ppb	4,841,634 cps	1.8 %
166Er (KED)	25.706 ppb	1,768,609 cps	1.6 %
169Tm (KED)	24.515 ppb	5,605,103 cps	0.8 %
174Yb (KED)	25.784 ppb	2,166,981 cps	3.8 %
175Lu (KED)	25.557 ppb	3,169,268 cps	0.5 %
205Tl (KED)	25.652 ppb	4,462,114 cps	1.1 %
208Pb (KED)	26.028 ppb	3,204,517 cps	1.5 %
232Th (KED)	24.240 ppb	5,645,238 cps	2.4 %
238U (KED)	24.357 ppb	6,605,028 cps	2.8 %

Sample Summary

Instrument ID: iCAP Q

Analysis index: 4

Analysis name: std2

Analysis started at: 8/31/2021 4:20:09 PM

User name: WINDOWS-UPCI4ER\Administrator

Category	Concentration average	Concentration RSD
9Be (KED)	52.004 ppb	0.4 %
11B (KED)	50.467 ppb	3.9 %
24Mg (KED)	49.485 ppb	1.2 %
27Al (KED)	49.632 ppb	5.5 %
51V (KED)	49.889 ppb	1.0 %
52Cr (KED)	50.169 ppb	0.2 %
55Mn (KED)	49.682 ppb	0.3 %
56Fe (KED)	50.315 ppb	1.8 %
58Ni (KED)	50.279 ppb	1.3 %
59Co (KED)	50.248 ppb	0.8 %
63Cu (KED)	50.138 ppb	0.6 %
64Zn (KED)	49.854 ppb	0.6 %
69Ga (KED)	49.671 ppb	2.4 %
75As (KED)	49.879 ppb	0.3 %
80Se (KED)	50.256 ppb	1.1 %
85Rb (KED)	49.990 ppb	0.8 %
88Sr (KED)	49.884 ppb	1.3 %
107Ag (KED)	51.331 ppb	1.3 %
114Cd (KED)	49.899 ppb	1.3 %
133Cs (KED)	50.251 ppb	0.5 %
138Ba (KED)	50.485 ppb	1.0 %
139La (KED)	51.185 ppb	1.3 %
140Ce (KED)	48.975 ppb	1.1 %
141Pr (KED)	49.924 ppb	1.1 %
142Nd (KED)	49.874 ppb	2.8 %
152Sm (KED)	50.201 ppb	0.7 %
153Eu (KED)	52.018 ppb	0.8 %
158Gd (KED)	51.520 ppb	2.7 %
164Dy (KED)	50.903 ppb	5.2 %
165Ho (KED)	49.284 ppb	1.2 %
166Er (KED)	51.248 ppb	2.0 %
169Tm (KED)	49.464 ppb	1.0 %
174Yb (KED)	49.920 ppb	2.9 %
175Lu (KED)	49.191 ppb	1.7 %
205Tl (KED)	50.102 ppb	2.4 %
208Pb (KED)	49.432 ppb	2.1 %
232Th (KED)	49.195 ppb	3.7 %
238U (KED)	50.301 ppb	3.2 %

Category	Concentration average	Intensity average	Intensity RSD
9Be (KED)	52.004 ppb	6,156 cps	0.4 %
11B (KED)	50.467 ppb	3,352 cps	3.7 %
24Mg (KED)	49.485 ppb	21,229 cps	1.2 %
27Al (KED)	49.632 ppb	5,009 cps	5.4 %
51V (KED)	49.889 ppb	317,091 cps	1.0 %
52Cr (KED)	50.169 ppb	498,165 cps	0.2 %
55Mn (KED)	49.682 ppb	231,643 cps	0.3 %
56Fe (KED)	50.315 ppb	461,302 cps	1.8 %
58Ni (KED)	50.279 ppb	611,588 cps	1.3 %
59Co (KED)	50.248 ppb	990,116 cps	0.8 %

Category	Concentration average	Intensity average	Intensity RSD
63Cu (KED)	50.138 ppb	766,200 cps	0.6 %
64Zn (KED)	49.854 ppb	190,003 cps	0.6 %
69Ga (KED)	49.671 ppb	225,371 cps	2.4 %
75As (KED)	49.879 ppb	53,746 cps	0.2 %
80Se (KED)	50.256 ppb	16,397 cps	1.1 %
85Rb (KED)	49.990 ppb	204,007 cps	0.8 %
88Sr (KED)	49.884 ppb	281,384 cps	1.3 %
107Ag (KED)	51.331 ppb	2,269,268 cps	1.3 %
114Cd (KED)	49.899 ppb	791,612 cps	1.3 %
133Cs (KED)	50.251 ppb	1,099,318 cps	0.5 %
138Ba (KED)	50.485 ppb	1,601,250 cps	0.9 %
139La (KED)	51.185 ppb	3,423,415 cps	1.3 %
140Ce (KED)	48.975 ppb	4,480,336 cps	1.1 %
141Pr (KED)	49.924 ppb	4,644,575 cps	1.1 %
142Nd (KED)	49.874 ppb	1,945,108 cps	2.8 %
152Sm (KED)	50.201 ppb	1,830,443 cps	0.7 %
153Eu (KED)	52.018 ppb	3,641,136 cps	0.8 %
158Gd (KED)	51.520 ppb	2,702,557 cps	2.7 %
164Dy (KED)	50.903 ppb	2,870,956 cps	5.2 %
165Ho (KED)	49.284 ppb	9,774,619 cps	1.2 %
166Er (KED)	51.248 ppb	3,525,646 cps	2.0 %
169Tm (KED)	49.464 ppb	11,309,290 cps	1.0 %
174Yb (KED)	49.920 ppb	4,195,542 cps	2.9 %
175Lu (KED)	49.191 ppb	6,100,050 cps	1.7 %
205Tl (KED)	50.102 ppb	8,715,038 cps	2.4 %
208Pb (KED)	49.432 ppb	6,073,575 cps	2.1 %
232Th (KED)	49.195 ppb	11,456,786 cps	3.7 %
238U (KED)	50.301 ppb	13,640,100 cps	3.2 %

Sample Summary

Instrument ID: iCAP Q

Analysis index: 5

Analysis name: std3

Analysis started at: 8/31/2021 4:23:16 PM

User name: WINDOWS-UPCI4ER\Administrator

Category	Concentration average	Concentration RSD
9Be (KED)	98.547 ppb	1.5 %
11B (KED)	98.772 ppb	0.4 %
24Mg (KED)	100.303 ppb	0.9 %
27Al (KED)	99.867 ppb	1.1 %
51V (KED)	99.861 ppb	0.5 %
52Cr (KED)	99.720 ppb	1.4 %
55Mn (KED)	100.008 ppb	2.2 %
56Fe (KED)	99.765 ppb	0.5 %
58Ni (KED)	99.668 ppb	1.3 %
59Co (KED)	99.673 ppb	2.7 %
63Cu (KED)	99.695 ppb	1.3 %
64Zn (KED)	99.698 ppb	0.2 %
69Ga (KED)	100.044 ppb	0.7 %
75As (KED)	99.729 ppb	1.2 %
80Se (KED)	99.385 ppb	1.5 %
85Rb (KED)	99.921 ppb	0.5 %
88Sr (KED)	100.074 ppb	1.2 %
107Ag (KED)	99.093 ppb	0.8 %
114Cd (KED)	99.837 ppb	2.5 %
133Cs (KED)	99.851 ppb	0.7 %
138Ba (KED)	99.816 ppb	1.9 %
139La (KED)	99.302 ppb	2.3 %
140Ce (KED)	100.339 ppb	1.7 %
141Pr (KED)	99.881 ppb	0.7 %
142Nd (KED)	100.061 ppb	1.2 %
152Sm (KED)	99.798 ppb	3.1 %
153Eu (KED)	98.719 ppb	2.6 %
158Gd (KED)	99.097 ppb	0.8 %
164Dy (KED)	99.452 ppb	2.0 %
165Ho (KED)	100.505 ppb	3.0 %
166Er (KED)	99.200 ppb	2.5 %
169Tm (KED)	100.389 ppb	1.7 %
174Yb (KED)	99.844 ppb	0.7 %
175Lu (KED)	100.265 ppb	2.5 %
205Tl (KED)	99.786 ppb	2.7 %
208Pb (KED)	100.027 ppb	1.0 %
232Th (KED)	100.593 ppb	2.1 %
238U (KED)	100.010 ppb	2.1 %

Category	Concentration average	Intensity average	Intensity RSD
9Be (KED)	98.547 ppb	11,665 cps	1.5 %
11B (KED)	98.772 ppb	6,389 cps	0.4 %
24Mg (KED)	100.303 ppb	42,287 cps	0.9 %
27Al (KED)	99.867 ppb	9,996 cps	1.0 %
51V (KED)	99.861 ppb	634,713 cps	0.5 %
52Cr (KED)	99.720 ppb	989,997 cps	1.4 %
55Mn (KED)	100.008 ppb	466,093 cps	2.2 %
56Fe (KED)	99.765 ppb	908,588 cps	0.5 %
58Ni (KED)	99.668 ppb	1,210,040 cps	1.3 %
59Co (KED)	99.673 ppb	1,964,019 cps	2.7 %

Category	Concentration average	Intensity average	Intensity RSD
63Cu (KED)	99.695 ppb	1,520,383 cps	1.3 %
64Zn (KED)	99.698 ppb	372,897 cps	0.2 %
69Ga (KED)	100.044 ppb	453,344 cps	0.7 %
75As (KED)	99.729 ppb	107,437 cps	1.2 %
80Se (KED)	99.385 ppb	31,797 cps	1.5 %
85Rb (KED)	99.921 ppb	407,716 cps	0.5 %
88Sr (KED)	100.074 ppb	564,276 cps	1.2 %
107Ag (KED)	99.093 ppb	4,380,605 cps	0.8 %
114Cd (KED)	99.837 ppb	1,583,488 cps	2.5 %
133Cs (KED)	99.851 ppb	2,184,396 cps	0.7 %
138Ba (KED)	99.816 ppb	3,155,710 cps	1.9 %
139La (KED)	99.302 ppb	6,641,603 cps	2.3 %
140Ce (KED)	100.339 ppb	9,179,081 cps	1.7 %
141Pr (KED)	99.881 ppb	9,292,273 cps	0.7 %
142Nd (KED)	100.061 ppb	3,902,409 cps	1.2 %
152Sm (KED)	99.798 ppb	3,638,901 cps	3.1 %
153Eu (KED)	98.719 ppb	6,910,146 cps	2.6 %
158Gd (KED)	99.097 ppb	5,198,217 cps	0.8 %
164Dy (KED)	99.452 ppb	5,609,186 cps	2.0 %
165Ho (KED)	100.505 ppb	19,933,598 cps	3.0 %
166Er (KED)	99.200 ppb	6,824,323 cps	2.5 %
169Tm (KED)	100.389 ppb	22,952,870 cps	1.7 %
174Yb (KED)	99.844 ppb	8,391,320 cps	0.7 %
175Lu (KED)	100.265 ppb	12,433,504 cps	2.5 %
205Tl (KED)	99.786 ppb	17,357,505 cps	2.7 %
208Pb (KED)	100.027 ppb	12,275,791 cps	1.0 %
232Th (KED)	100.593 ppb	23,426,462 cps	2.1 %
238U (KED)	100.010 ppb	27,119,568 cps	2.1 %

Sample Summary

Instrument ID: iCAP Q

Analysis index: 6

Analysis name: 18110jian

Analysis started at: 8/31/2021 4:26:30 PM

User name: WINDOWS-UPCI4ER\Administrator

Category	Concentration average	Concentration RSD
9Be (KED)	0.066 ppb	24.7 %
11B (KED)	1.272 ppb	48.7 %
24Mg (KED)	433.150 ppb	2.3 %
27Al (KED)	485.286 ppb	4.1 %
51V (KED)	0.890 ppb	7.1 %
52Cr (KED)	2.880 ppb	2.7 %
55Mn (KED)	13.929 ppb	3.4 %
56Fe (KED)	471.966 ppb	1.9 %
58Ni (KED)	2.487 ppb	2.8 %
59Co (KED)	0.241 ppb	2.0 %
63Cu (KED)	7.608 ppb	1.7 %
64Zn (KED)	175.107 ppb	1.0 %
69Ga (KED)	1.655 ppb	1.7 %
75As (KED)	0.829 ppb	1.9 %
80Se (KED)	1.351 ppb	30.4 %
85Rb (KED)	1.499 ppb	2.4 %
88Sr (KED)	5.811 ppb	0.8 %
107Ag (KED)	0.080 ppb	16.2 %
114Cd (KED)	0.170 ppb	2.1 %
133Cs (KED)	0.136 ppb	10.1 %
138Ba (KED)	6.747 ppb	0.7 %
139La (KED)	0.476 ppb	3.1 %
140Ce (KED)	0.917 ppb	1.4 %
141Pr (KED)	0.123 ppb	11.9 %
142Nd (KED)	0.560 ppb	1.8 %
152Sm (KED)	0.091 ppb	11.0 %
153Eu (KED)	0.033 ppb	40.7 %
158Gd (KED)	0.083 ppb	14.8 %
164Dy (KED)	0.063 ppb	21.6 %
165Ho (KED)	0.026 ppb	52.2 %
166Er (KED)	0.036 ppb	38.2 %
169Tm (KED)	0.020 ppb	69.6 %
174Yb (KED)	0.034 ppb	36.6 %
175Lu (KED)	0.019 ppb	66.7 %
205Tl (KED)	0.034 ppb	41.7 %
208Pb (KED)	2.179 ppb	2.2 %
232Th (KED)	0.305 ppb	16.0 %
238U (KED)	0.057 ppb	28.2 %

Category	Concentration average	Intensity average	Intensity RSD
9Be (KED)	0.066 ppb	8 cps	24.7 %
11B (KED)	1.272 ppb	258 cps	15.1 %
24Mg (KED)	433.150 ppb	180,214 cps	2.3 %
27Al (KED)	485.286 ppb	48,262 cps	4.1 %
51V (KED)	0.890 ppb	5,660 cps	7.1 %
52Cr (KED)	2.880 ppb	28,798 cps	2.6 %
55Mn (KED)	13.929 ppb	65,083 cps	3.4 %
56Fe (KED)	471.966 ppb	4,275,238 cps	1.9 %
58Ni (KED)	2.487 ppb	32,488 cps	2.6 %
59Co (KED)	0.241 ppb	4,753 cps	2.0 %

Category	Concentration average	Intensity average	Intensity RSD
63Cu (KED)	7.608 ppb	118,972 cps	1.6 %
64Zn (KED)	175.107 ppb	649,603 cps	1.0 %
69Ga (KED)	1.655 ppb	8,068 cps	1.6 %
75As (KED)	0.829 ppb	916 cps	1.9 %
80Se (KED)	1.351 ppb	1,068 cps	12.1 %
85Rb (KED)	1.499 ppb	6,175 cps	2.4 %
88Sr (KED)	5.811 ppb	32,966 cps	0.8 %
107Ag (KED)	0.080 ppb	3,697 cps	15.5 %
114Cd (KED)	0.170 ppb	3,055 cps	1.9 %
133Cs (KED)	0.136 ppb	2,988 cps	10.0 %
138Ba (KED)	6.747 ppb	222,999 cps	0.7 %
139La (KED)	0.476 ppb	31,880 cps	3.1 %
140Ce (KED)	0.917 ppb	84,040 cps	1.4 %
141Pr (KED)	0.123 ppb	11,471 cps	11.8 %
142Nd (KED)	0.560 ppb	21,871 cps	1.8 %
152Sm (KED)	0.091 ppb	3,322 cps	11.0 %
153Eu (KED)	0.033 ppb	2,304 cps	40.7 %
158Gd (KED)	0.083 ppb	4,382 cps	14.8 %
164Dy (KED)	0.063 ppb	3,551 cps	21.5 %
165Ho (KED)	0.026 ppb	5,124 cps	52.1 %
166Er (KED)	0.036 ppb	2,714 cps	34.7 %
169Tm (KED)	0.020 ppb	4,582 cps	69.6 %
174Yb (KED)	0.034 ppb	2,837 cps	36.6 %
175Lu (KED)	0.019 ppb	2,388 cps	66.7 %
205Tl (KED)	0.034 ppb	5,884 cps	41.6 %
208Pb (KED)	2.179 ppb	281,009 cps	2.1 %
232Th (KED)	0.305 ppb	71,223 cps	16.0 %
238U (KED)	0.057 ppb	15,550 cps	28.1 %

Sample Summary

Instrument ID: iCAP Q

Analysis index: 7

Analysis name: 17426jian

Analysis started at: 8/31/2021 4:29:36 PM

User name: WINDOWS-UPCI4ER\Administrator

Category	Concentration average	Concentration RSD
9Be (KED)	0.019 ppb	86.6 %
11B (KED)	3.463 ppb	23.4 %
24Mg (KED)	328.459 ppb	2.6 %
27Al (KED)	411.833 ppb	1.1 %
51V (KED)	0.750 ppb	3.9 %
52Cr (KED)	4.544 ppb	1.7 %
55Mn (KED)	10.914 ppb	0.9 %
56Fe (KED)	380.573 ppb	1.3 %
58Ni (KED)	2.011 ppb	3.2 %
59Co (KED)	0.192 ppb	2.7 %
63Cu (KED)	4.521 ppb	1.3 %
64Zn (KED)	189.885 ppb	1.0 %
69Ga (KED)	1.108 ppb	1.3 %
75As (KED)	0.972 ppb	8.2 %
80Se (KED)	2.240 ppb	5.9 %
85Rb (KED)	1.282 ppb	2.1 %
88Sr (KED)	4.300 ppb	1.3 %
107Ag (KED)	0.069 ppb	7.9 %
114Cd (KED)	0.211 ppb	2.7 %
133Cs (KED)	0.083 ppb	3.3 %
138Ba (KED)	4.162 ppb	1.2 %
139La (KED)	0.344 ppb	0.8 %
140Ce (KED)	0.681 ppb	1.1 %
141Pr (KED)	0.080 ppb	3.1 %
142Nd (KED)	0.412 ppb	1.0 %
152Sm (KED)	0.055 ppb	2.9 %
153Eu (KED)	0.013 ppb	9.1 %
158Gd (KED)	0.048 ppb	1.2 %
164Dy (KED)	0.033 ppb	2.2 %
165Ho (KED)	0.008 ppb	8.5 %
166Er (KED)	0.017 ppb	9.4 %
169Tm (KED)	0.004 ppb	30.3 %
174Yb (KED)	0.015 ppb	8.2 %
175Lu (KED)	0.004 ppb	29.1 %
205Tl (KED)	0.013 ppb	5.0 %
208Pb (KED)	1.801 ppb	0.4 %
232Th (KED)	0.132 ppb	3.6 %
238U (KED)	0.030 ppb	2.6 %

Category	Concentration average	Intensity average	Intensity RSD
9Be (KED)	0.019 ppb	2 cps	86.6 %
11B (KED)	3.463 ppb	396 cps	12.9 %
24Mg (KED)	328.459 ppb	136,831 cps	2.6 %
27Al (KED)	411.833 ppb	40,969 cps	1.1 %
51V (KED)	0.750 ppb	4,770 cps	3.9 %
52Cr (KED)	4.544 ppb	45,310 cps	1.7 %
55Mn (KED)	10.914 ppb	51,041 cps	0.9 %
56Fe (KED)	380.573 ppb	3,448,568 cps	1.3 %
58Ni (KED)	2.011 ppb	26,717 cps	2.9 %
59Co (KED)	0.192 ppb	3,795 cps	2.7 %

Category	Concentration average	Intensity average	Intensity RSD
63Cu (KED)	4.521 ppb	71,989 cps	1.2 %
64Zn (KED)	189.885 ppb	703,829 cps	1.0 %
69Ga (KED)	1.108 ppb	5,591 cps	1.2 %
75As (KED)	0.972 ppb	1,069 cps	8.0 %
80Se (KED)	2.240 ppb	1,347 cps	3.1 %
85Rb (KED)	1.282 ppb	5,288 cps	2.1 %
88Sr (KED)	4.300 ppb	24,448 cps	1.3 %
107Ag (KED)	0.069 ppb	3,229 cps	7.5 %
114Cd (KED)	0.211 ppb	3,703 cps	2.5 %
133Cs (KED)	0.083 ppb	1,827 cps	3.3 %
138Ba (KED)	4.162 ppb	141,555 cps	1.1 %
139La (KED)	0.344 ppb	23,050 cps	0.8 %
140Ce (KED)	0.681 ppb	62,389 cps	1.1 %
141Pr (KED)	0.080 ppb	7,438 cps	3.1 %
142Nd (KED)	0.412 ppb	16,093 cps	1.0 %
152Sm (KED)	0.055 ppb	2,026 cps	2.9 %
153Eu (KED)	0.013 ppb	902 cps	9.1 %
158Gd (KED)	0.048 ppb	2,525 cps	1.2 %
164Dy (KED)	0.033 ppb	1,861 cps	2.1 %
165Ho (KED)	0.008 ppb	1,680 cps	8.5 %
166Er (KED)	0.017 ppb	1,393 cps	7.7 %
169Tm (KED)	0.004 ppb	852 cps	30.3 %
174Yb (KED)	0.015 ppb	1,242 cps	8.2 %
175Lu (KED)	0.004 ppb	454 cps	29.1 %
205Tl (KED)	0.013 ppb	2,261 cps	5.0 %
208Pb (KED)	1.801 ppb	234,592 cps	0.4 %
232Th (KED)	0.132 ppb	31,029 cps	3.6 %
238U (KED)	0.030 ppb	8,192 cps	2.6 %

Sample Summary

Instrument ID: iCAP Q

Analysis index: 8

Analysis name: 18052jian

Analysis started at: 8/31/2021 4:32:39 PM

User name: WINDOWS-UPCI4ER\Administrator

Category	Concentration average	Concentration RSD
9Be (KED)	0.028 ppb	0.0 %
11B (KED)	12.456 ppb	12.5 %
24Mg (KED)	750.723 ppb	1.5 %
27Al (KED)	914.109 ppb	0.3 %
51V (KED)	1.728 ppb	2.5 %
52Cr (KED)	5.315 ppb	1.8 %
55Mn (KED)	25.608 ppb	0.6 %
56Fe (KED)	918.002 ppb	1.0 %
58Ni (KED)	4.148 ppb	1.0 %
59Co (KED)	0.431 ppb	8.0 %
63Cu (KED)	8.337 ppb	0.6 %
64Zn (KED)	195.548 ppb	0.8 %
69Ga (KED)	2.954 ppb	4.6 %
75As (KED)	0.966 ppb	6.7 %
80Se (KED)	1.549 ppb	9.0 %
85Rb (KED)	2.902 ppb	3.1 %
88Sr (KED)	8.360 ppb	2.3 %
107Ag (KED)	0.078 ppb	5.9 %
114Cd (KED)	0.134 ppb	6.6 %
133Cs (KED)	0.199 ppb	4.4 %
138Ba (KED)	9.538 ppb	2.6 %
139La (KED)	0.759 ppb	0.1 %
140Ce (KED)	1.514 ppb	1.3 %
141Pr (KED)	0.174 ppb	2.5 %
142Nd (KED)	0.886 ppb	3.0 %
152Sm (KED)	0.122 ppb	2.5 %
153Eu (KED)	0.026 ppb	4.5 %
158Gd (KED)	0.105 ppb	1.9 %
164Dy (KED)	0.075 ppb	2.0 %
165Ho (KED)	0.015 ppb	8.7 %
166Er (KED)	0.035 ppb	3.6 %
169Tm (KED)	0.006 ppb	11.4 %
174Yb (KED)	0.029 ppb	4.8 %
175Lu (KED)	0.005 ppb	8.5 %
205Tl (KED)	0.017 ppb	2.9 %
208Pb (KED)	1.312 ppb	0.5 %
232Th (KED)	0.229 ppb	3.6 %
238U (KED)	0.048 ppb	5.4 %

Category	Concentration average	Intensity average	Intensity RSD
9Be (KED)	0.028 ppb	3 cps	0.0 %
11B (KED)	12.456 ppb	961 cps	10.1 %
24Mg (KED)	750.723 ppb	311,810 cps	1.5 %
27Al (KED)	914.109 ppb	90,837 cps	0.3 %
51V (KED)	1.728 ppb	10,984 cps	2.5 %
52Cr (KED)	5.315 ppb	52,968 cps	1.8 %
55Mn (KED)	25.608 ppb	119,490 cps	0.6 %
56Fe (KED)	918.002 ppb	8,309,739 cps	1.0 %
58Ni (KED)	4.148 ppb	52,616 cps	1.0 %
59Co (KED)	0.431 ppb	8,496 cps	8.0 %

Category	Concentration average	Intensity average	Intensity RSD
63Cu (KED)	8.337 ppb	130,062 cps	0.6 %
64Zn (KED)	195.548 ppb	724,607 cps	0.8 %
69Ga (KED)	2.954 ppb	13,948 cps	4.4 %
75As (KED)	0.966 ppb	1,062 cps	6.5 %
80Se (KED)	1.549 ppb	1,130 cps	3.9 %
85Rb (KED)	2.902 ppb	11,898 cps	3.1 %
88Sr (KED)	8.360 ppb	47,331 cps	2.3 %
107Ag (KED)	0.078 ppb	3,625 cps	5.6 %
114Cd (KED)	0.134 ppb	2,472 cps	5.6 %
133Cs (KED)	0.199 ppb	4,362 cps	4.4 %
138Ba (KED)	9.538 ppb	310,960 cps	2.5 %
139La (KED)	0.759 ppb	50,825 cps	0.1 %
140Ce (KED)	1.514 ppb	138,672 cps	1.3 %
141Pr (KED)	0.174 ppb	16,261 cps	2.5 %
142Nd (KED)	0.886 ppb	34,605 cps	3.0 %
152Sm (KED)	0.122 ppb	4,453 cps	2.5 %
153Eu (KED)	0.026 ppb	1,853 cps	4.5 %
158Gd (KED)	0.105 ppb	5,523 cps	1.9 %
164Dy (KED)	0.075 ppb	4,235 cps	2.0 %
165Ho (KED)	0.015 ppb	2,923 cps	8.7 %
166Er (KED)	0.035 ppb	2,676 cps	3.3 %
169Tm (KED)	0.006 ppb	1,320 cps	11.4 %
174Yb (KED)	0.029 ppb	2,465 cps	4.8 %
175Lu (KED)	0.005 ppb	614 cps	8.5 %
205Tl (KED)	0.017 ppb	2,973 cps	2.9 %
208Pb (KED)	1.312 ppb	174,629 cps	0.5 %
232Th (KED)	0.229 ppb	53,534 cps	3.6 %
238U (KED)	0.048 ppb	13,126 cps	5.4 %

Sample Summary

Instrument ID: iCAP Q

Analysis index: 9

Analysis name: 18062jian

Analysis started at: 8/31/2021 4:35:50 PM

User name: WINDOWS-UPCI4ER\Administrator

Category	Concentration average	Concentration RSD
9Be (KED)	0.019 ppb	173.2 %
11B (KED)	3.975 ppb	6.8 %
24Mg (KED)	580.102 ppb	1.0 %
27Al (KED)	631.072 ppb	1.3 %
51V (KED)	1.177 ppb	2.4 %
52Cr (KED)	4.226 ppb	1.2 %
55Mn (KED)	18.121 ppb	1.0 %
56Fe (KED)	581.981 ppb	1.6 %
58Ni (KED)	2.705 ppb	0.2 %
59Co (KED)	0.369 ppb	3.0 %
63Cu (KED)	12.258 ppb	0.8 %
64Zn (KED)	195.588 ppb	0.3 %
69Ga (KED)	2.062 ppb	1.1 %
75As (KED)	0.670 ppb	2.8 %
80Se (KED)	1.443 ppb	11.6 %
85Rb (KED)	2.092 ppb	2.1 %
88Sr (KED)	6.516 ppb	2.8 %
107Ag (KED)	0.066 ppb	1.0 %
114Cd (KED)	0.122 ppb	3.0 %
133Cs (KED)	0.116 ppb	0.1 %
138Ba (KED)	6.229 ppb	0.9 %
139La (KED)	0.481 ppb	1.6 %
140Ce (KED)	0.950 ppb	0.9 %
141Pr (KED)	0.110 ppb	2.4 %
142Nd (KED)	0.568 ppb	1.2 %
152Sm (KED)	0.076 ppb	2.4 %
153Eu (KED)	0.016 ppb	2.6 %
158Gd (KED)	0.065 ppb	4.2 %
164Dy (KED)	0.046 ppb	1.5 %
165Ho (KED)	0.009 ppb	4.5 %
166Er (KED)	0.021 ppb	7.1 %
169Tm (KED)	0.003 ppb	11.9 %
174Yb (KED)	0.018 ppb	3.6 %
175Lu (KED)	0.003 ppb	12.7 %
205Tl (KED)	0.013 ppb	4.4 %
208Pb (KED)	1.455 ppb	4.5 %
232Th (KED)	0.142 ppb	1.0 %
238U (KED)	0.036 ppb	2.7 %

Category	Concentration average	Intensity average	Intensity RSD
9Be (KED)	0.019 ppb	2 cps	173.2 %
11B (KED)	3.975 ppb	428 cps	4.0 %
24Mg (KED)	580.102 ppb	241,108 cps	1.0 %
27Al (KED)	631.072 ppb	62,736 cps	1.3 %
51V (KED)	1.177 ppb	7,480 cps	2.4 %
52Cr (KED)	4.226 ppb	42,162 cps	1.1 %
55Mn (KED)	18.121 ppb	84,615 cps	1.0 %
56Fe (KED)	581.981 ppb	5,270,347 cps	1.6 %
58Ni (KED)	2.705 ppb	35,126 cps	0.2 %
59Co (KED)	0.369 ppb	7,289 cps	3.0 %

Category	Concentration average	Intensity average	Intensity RSD
63Cu (KED)	12.258 ppb	189,738 cps	0.8 %
64Zn (KED)	195.588 ppb	724,755 cps	0.3 %
69Ga (KED)	2.062 ppb	9,909 cps	1.1 %
75As (KED)	0.670 ppb	743 cps	2.7 %
80Se (KED)	1.443 ppb	1,097 cps	4.8 %
85Rb (KED)	2.092 ppb	8,592 cps	2.1 %
88Sr (KED)	6.516 ppb	36,939 cps	2.8 %
107Ag (KED)	0.066 ppb	3,106 cps	0.9 %
114Cd (KED)	0.122 ppb	2,289 cps	2.6 %
133Cs (KED)	0.116 ppb	2,544 cps	0.1 %
138Ba (KED)	6.229 ppb	206,680 cps	0.9 %
139La (KED)	0.481 ppb	32,196 cps	1.6 %
140Ce (KED)	0.950 ppb	86,993 cps	0.9 %
141Pr (KED)	0.110 ppb	10,266 cps	2.4 %
142Nd (KED)	0.568 ppb	22,191 cps	1.2 %
152Sm (KED)	0.076 ppb	2,764 cps	2.4 %
153Eu (KED)	0.016 ppb	1,132 cps	2.6 %
158Gd (KED)	0.065 ppb	3,387 cps	4.2 %
164Dy (KED)	0.046 ppb	2,607 cps	1.4 %
165Ho (KED)	0.009 ppb	1,746 cps	4.5 %
166Er (KED)	0.021 ppb	1,668 cps	6.1 %
169Tm (KED)	0.003 ppb	784 cps	11.9 %
174Yb (KED)	0.018 ppb	1,542 cps	3.6 %
175Lu (KED)	0.003 ppb	356 cps	12.7 %
205Tl (KED)	0.013 ppb	2,191 cps	4.3 %
208Pb (KED)	1.455 ppb	192,236 cps	4.2 %
232Th (KED)	0.142 ppb	33,251 cps	1.0 %
238U (KED)	0.036 ppb	9,738 cps	2.7 %

Sample Summary

Instrument ID: iCAP Q

Analysis index: 10

Analysis name: 17196jian

Analysis started at: 8/31/2021 4:38:58 PM

User name: WINDOWS-UPCI4ER\Administrator

Category	Concentration average	Concentration RSD
9Be (KED)	0.019 ppb	86.6 %
11B (KED)	1.502 ppb	41.4 %
24Mg (KED)	547.503 ppb	1.7 %
27Al (KED)	550.802 ppb	1.6 %
51V (KED)	1.022 ppb	4.0 %
52Cr (KED)	3.726 ppb	1.6 %
55Mn (KED)	19.426 ppb	1.1 %
56Fe (KED)	496.193 ppb	1.3 %
58Ni (KED)	2.400 ppb	0.6 %
59Co (KED)	0.283 ppb	1.5 %
63Cu (KED)	5.384 ppb	0.9 %
64Zn (KED)	205.122 ppb	1.5 %
69Ga (KED)	1.958 ppb	0.7 %
75As (KED)	1.063 ppb	2.9 %
80Se (KED)	1.450 ppb	5.5 %
85Rb (KED)	1.318 ppb	3.0 %
88Sr (KED)	6.607 ppb	1.2 %
107Ag (KED)	0.080 ppb	5.9 %
114Cd (KED)	0.129 ppb	7.7 %
133Cs (KED)	0.099 ppb	1.7 %
138Ba (KED)	6.066 ppb	2.2 %
139La (KED)	0.406 ppb	2.5 %
140Ce (KED)	0.799 ppb	2.6 %
141Pr (KED)	0.088 ppb	2.8 %
142Nd (KED)	0.475 ppb	1.5 %
152Sm (KED)	0.066 ppb	0.4 %
153Eu (KED)	0.014 ppb	1.8 %
158Gd (KED)	0.056 ppb	3.0 %
164Dy (KED)	0.038 ppb	8.7 %
165Ho (KED)	0.007 ppb	10.9 %
166Er (KED)	0.016 ppb	9.9 %
169Tm (KED)	0.003 ppb	13.1 %
174Yb (KED)	0.015 ppb	10.2 %
175Lu (KED)	0.002 ppb	20.7 %
205Tl (KED)	0.011 ppb	6.4 %
208Pb (KED)	1.386 ppb	2.6 %
232Th (KED)	0.118 ppb	3.0 %
238U (KED)	0.028 ppb	3.3 %

Category	Concentration average	Intensity average	Intensity RSD
9Be (KED)	0.019 ppb	2 cps	86.6 %
11B (KED)	1.502 ppb	272 cps	14.3 %
24Mg (KED)	547.503 ppb	227,599 cps	1.7 %
27Al (KED)	550.802 ppb	54,767 cps	1.6 %
51V (KED)	1.022 ppb	6,497 cps	4.0 %
52Cr (KED)	3.726 ppb	37,200 cps	1.6 %
55Mn (KED)	19.426 ppb	90,691 cps	1.0 %
56Fe (KED)	496.193 ppb	4,494,377 cps	1.3 %
58Ni (KED)	2.400 ppb	31,440 cps	0.5 %
59Co (KED)	0.283 ppb	5,579 cps	1.5 %

Category	Concentration average	Intensity average	Intensity RSD
63Cu (KED)	5.384 ppb	85,120 cps	0.8 %
64Zn (KED)	205.122 ppb	759,738 cps	1.4 %
69Ga (KED)	1.958 ppb	9,440 cps	0.7 %
75As (KED)	1.063 ppb	1,167 cps	2.8 %
80Se (KED)	1.450 ppb	1,099 cps	2.3 %
85Rb (KED)	1.318 ppb	5,436 cps	2.9 %
88Sr (KED)	6.607 ppb	37,450 cps	1.2 %
107Ag (KED)	0.080 ppb	3,707 cps	5.6 %
114Cd (KED)	0.129 ppb	2,396 cps	6.5 %
133Cs (KED)	0.099 ppb	2,175 cps	1.6 %
138Ba (KED)	6.066 ppb	201,547 cps	2.1 %
139La (KED)	0.406 ppb	27,219 cps	2.5 %
140Ce (KED)	0.799 ppb	73,249 cps	2.6 %
141Pr (KED)	0.088 ppb	8,197 cps	2.8 %
142Nd (KED)	0.475 ppb	18,562 cps	1.5 %
152Sm (KED)	0.066 ppb	2,411 cps	0.4 %
153Eu (KED)	0.014 ppb	948 cps	1.8 %
158Gd (KED)	0.056 ppb	2,917 cps	3.0 %
164Dy (KED)	0.038 ppb	2,164 cps	8.7 %
165Ho (KED)	0.007 ppb	1,462 cps	10.9 %
166Er (KED)	0.016 ppb	1,369 cps	8.1 %
169Tm (KED)	0.003 ppb	583 cps	13.1 %
174Yb (KED)	0.015 ppb	1,272 cps	10.2 %
175Lu (KED)	0.002 ppb	263 cps	20.7 %
205Tl (KED)	0.011 ppb	1,921 cps	6.3 %
208Pb (KED)	1.386 ppb	183,745 cps	2.4 %
232Th (KED)	0.118 ppb	27,765 cps	3.0 %
238U (KED)	0.028 ppb	7,663 cps	3.3 %

Sample Summary

Instrument ID: iCAP Q

Analysis index: 11

Analysis name: 17640jian

Analysis started at: 8/31/2021 4:42:11 PM

User name: WINDOWS-UPCI4ER\Administrator

Category	Concentration average	Concentration RSD
9Be (KED)	0.028 ppb	100.0 %
11B (KED)	0.848 ppb	15.7 %
24Mg (KED)	394.399 ppb	1.1 %
27Al (KED)	469.424 ppb	1.2 %
51V (KED)	0.856 ppb	3.5 %
52Cr (KED)	2.166 ppb	1.7 %
55Mn (KED)	11.993 ppb	1.7 %
56Fe (KED)	418.914 ppb	0.6 %
58Ni (KED)	1.954 ppb	1.9 %
59Co (KED)	0.207 ppb	1.7 %
63Cu (KED)	7.786 ppb	3.4 %
64Zn (KED)	174.615 ppb	0.3 %
69Ga (KED)	1.399 ppb	4.3 %
75As (KED)	0.763 ppb	12.4 %
80Se (KED)	1.790 ppb	17.0 %
85Rb (KED)	1.851 ppb	0.6 %
88Sr (KED)	4.503 ppb	0.4 %
107Ag (KED)	0.049 ppb	7.3 %
114Cd (KED)	0.143 ppb	1.8 %
133Cs (KED)	0.083 ppb	7.4 %
138Ba (KED)	4.381 ppb	2.2 %
139La (KED)	0.378 ppb	1.3 %
140Ce (KED)	0.725 ppb	1.9 %
141Pr (KED)	0.088 ppb	3.9 %
142Nd (KED)	0.447 ppb	1.2 %
152Sm (KED)	0.058 ppb	3.8 %
153Eu (KED)	0.011 ppb	10.1 %
158Gd (KED)	0.051 ppb	4.9 %
164Dy (KED)	0.035 ppb	2.3 %
165Ho (KED)	0.007 ppb	1.3 %
166Er (KED)	0.015 ppb	4.2 %
169Tm (KED)	0.002 ppb	11.5 %
174Yb (KED)	0.014 ppb	5.8 %
175Lu (KED)	0.002 ppb	9.9 %
205Tl (KED)	0.008 ppb	9.0 %
208Pb (KED)	0.683 ppb	3.4 %
232Th (KED)	0.102 ppb	3.1 %
238U (KED)	0.025 ppb	2.5 %

Category	Concentration average	Intensity average	Intensity RSD
9Be (KED)	0.028 ppb	3 cps	100.0 %
11B (KED)	0.848 ppb	231 cps	3.6 %
24Mg (KED)	394.399 ppb	164,156 cps	1.1 %
27Al (KED)	469.424 ppb	46,687 cps	1.2 %
51V (KED)	0.856 ppb	5,442 cps	3.5 %
52Cr (KED)	2.166 ppb	21,716 cps	1.7 %
55Mn (KED)	11.993 ppb	56,066 cps	1.7 %
56Fe (KED)	418.914 ppb	3,795,366 cps	0.6 %
58Ni (KED)	1.954 ppb	26,025 cps	1.8 %
59Co (KED)	0.207 ppb	4,086 cps	1.7 %

Category	Concentration average	Intensity average	Intensity RSD
63Cu (KED)	7.786 ppb	121,674 cps	3.3 %
64Zn (KED)	174.615 ppb	647,797 cps	0.3 %
69Ga (KED)	1.399 ppb	6,909 cps	4.0 %
75As (KED)	0.763 ppb	844 cps	12.1 %
80Se (KED)	1.790 ppb	1,206 cps	7.9 %
85Rb (KED)	1.851 ppb	7,609 cps	0.6 %
88Sr (KED)	4.503 ppb	25,590 cps	0.4 %
107Ag (KED)	0.049 ppb	2,346 cps	6.8 %
114Cd (KED)	0.143 ppb	2,616 cps	1.6 %
133Cs (KED)	0.083 ppb	1,841 cps	7.4 %
138Ba (KED)	4.381 ppb	148,460 cps	2.1 %
139La (KED)	0.378 ppb	25,293 cps	1.3 %
140Ce (KED)	0.725 ppb	66,467 cps	1.9 %
141Pr (KED)	0.088 ppb	8,221 cps	3.9 %
142Nd (KED)	0.447 ppb	17,470 cps	1.2 %
152Sm (KED)	0.058 ppb	2,102 cps	3.8 %
153Eu (KED)	0.011 ppb	803 cps	10.1 %
158Gd (KED)	0.051 ppb	2,681 cps	4.9 %
164Dy (KED)	0.035 ppb	2,001 cps	2.3 %
165Ho (KED)	0.007 ppb	1,397 cps	1.3 %
166Er (KED)	0.015 ppb	1,243 cps	3.3 %
169Tm (KED)	0.002 ppb	528 cps	11.5 %
174Yb (KED)	0.014 ppb	1,190 cps	5.8 %
175Lu (KED)	0.002 ppb	271 cps	9.9 %
205Tl (KED)	0.008 ppb	1,457 cps	9.0 %
208Pb (KED)	0.683 ppb	97,599 cps	3.0 %
232Th (KED)	0.102 ppb	23,877 cps	3.1 %
238U (KED)	0.025 ppb	6,761 cps	2.5 %

Sample Summary

Instrument ID: iCAP Q

Analysis index: 12

Analysis name: 296jian

Analysis started at: 8/31/2021 4:45:24 PM

User name: WINDOWS-UPCI4ER\Administrator

Category	Concentration average	Concentration RSD
9Be (KED)	0.047 ppb	124.9 %
11B (KED)	8.375 ppb	5.1 %
24Mg (KED)	1,648.139 ppb	1.2 %
27Al (KED)	2,383.751 ppb	0.3 %
51V (KED)	4.709 ppb	0.8 %
52Cr (KED)	8.009 ppb	0.4 %
55Mn (KED)	58.294 ppb	1.2 %
56Fe (KED)	2,577.706 ppb	0.3 %
58Ni (KED)	13.398 ppb	0.3 %
59Co (KED)	1.201 ppb	0.5 %
63Cu (KED)	16.206 ppb	0.6 %
64Zn (KED)	203.140 ppb	0.4 %
69Ga (KED)	5.419 ppb	4.0 %
75As (KED)	1.292 ppb	2.9 %
80Se (KED)	1.709 ppb	2.2 %
85Rb (KED)	6.672 ppb	0.7 %
88Sr (KED)	18.218 ppb	0.7 %
107Ag (KED)	0.215 ppb	3.2 %
114Cd (KED)	0.108 ppb	4.4 %
133Cs (KED)	0.524 ppb	5.1 %
138Ba (KED)	15.491 ppb	0.5 %
139La (KED)	1.792 ppb	2.0 %
140Ce (KED)	3.759 ppb	2.3 %
141Pr (KED)	0.452 ppb	0.5 %
142Nd (KED)	2.383 ppb	1.9 %
152Sm (KED)	0.320 ppb	3.6 %
153Eu (KED)	0.063 ppb	4.8 %
158Gd (KED)	0.291 ppb	0.8 %
164Dy (KED)	0.210 ppb	0.7 %
165Ho (KED)	0.040 ppb	3.0 %
166Er (KED)	0.107 ppb	1.9 %
169Tm (KED)	0.015 ppb	3.1 %
174Yb (KED)	0.089 ppb	6.5 %
175Lu (KED)	0.013 ppb	10.2 %
205Tl (KED)	0.024 ppb	4.3 %
208Pb (KED)	1.653 ppb	1.4 %
232Th (KED)	0.491 ppb	2.7 %
238U (KED)	0.121 ppb	3.3 %

Category	Concentration average	Intensity average	Intensity RSD
9Be (KED)	0.047 ppb	6 cps	124.9 %
11B (KED)	8.375 ppb	704 cps	3.8 %
24Mg (KED)	1,648.139 ppb	683,684 cps	1.2 %
27Al (KED)	2,383.751 ppb	236,749 cps	0.3 %
51V (KED)	4.709 ppb	29,935 cps	0.8 %
52Cr (KED)	8.009 ppb	79,710 cps	0.4 %
55Mn (KED)	58.294 ppb	271,762 cps	1.2 %
56Fe (KED)	2,577.706 ppb	23,322,167 cps	0.3 %
58Ni (KED)	13.398 ppb	164,692 cps	0.3 %
59Co (KED)	1.201 ppb	23,674 cps	0.5 %

Category	Concentration average	Intensity average	Intensity RSD
63Cu (KED)	16.206 ppb	249,809 cps	0.6 %
64Zn (KED)	203.140 ppb	752,466 cps	0.4 %
69Ga (KED)	5.419 ppb	25,102 cps	3.9 %
75As (KED)	1.292 ppb	1,413 cps	2.9 %
80Se (KED)	1.709 ppb	1,180 cps	1.0 %
85Rb (KED)	6.672 ppb	27,278 cps	0.7 %
88Sr (KED)	18.218 ppb	102,898 cps	0.6 %
107Ag (KED)	0.215 ppb	9,672 cps	3.1 %
114Cd (KED)	0.108 ppb	2,070 cps	3.6 %
133Cs (KED)	0.524 ppb	11,483 cps	5.1 %
138Ba (KED)	15.491 ppb	498,542 cps	0.5 %
139La (KED)	1.792 ppb	119,878 cps	2.0 %
140Ce (KED)	3.759 ppb	343,997 cps	2.3 %
141Pr (KED)	0.452 ppb	42,034 cps	0.5 %
142Nd (KED)	2.383 ppb	92,987 cps	1.9 %
152Sm (KED)	0.320 ppb	11,654 cps	3.6 %
153Eu (KED)	0.063 ppb	4,437 cps	4.8 %
158Gd (KED)	0.291 ppb	15,257 cps	0.8 %
164Dy (KED)	0.210 ppb	11,866 cps	0.7 %
165Ho (KED)	0.040 ppb	7,921 cps	3.0 %
166Er (KED)	0.107 ppb	7,578 cps	1.9 %
169Tm (KED)	0.015 ppb	3,317 cps	3.1 %
174Yb (KED)	0.089 ppb	7,500 cps	6.5 %
175Lu (KED)	0.013 ppb	1,617 cps	10.2 %
205Tl (KED)	0.024 ppb	4,221 cps	4.3 %
208Pb (KED)	1.653 ppb	216,476 cps	1.3 %
232Th (KED)	0.491 ppb	114,662 cps	2.6 %
238U (KED)	0.121 ppb	32,880 cps	3.3 %

Sample Summary

Instrument ID: iCAP Q

Analysis index: 13

Analysis name: 292jian

Analysis started at: 8/31/2021 4:48:36 PM

User name: WINDOWS-UPCI4ER\Administrator

Category	Concentration average	Concentration RSD
9Be (KED)	0.075 ppb	78.1 %
11B (KED)	4.806 ppb	16.7 %
24Mg (KED)	1,416.215 ppb	1.8 %
27Al (KED)	2,108.695 ppb	0.6 %
51V (KED)	4.262 ppb	0.9 %
52Cr (KED)	8.654 ppb	2.0 %
55Mn (KED)	48.652 ppb	1.9 %
56Fe (KED)	2,304.677 ppb	1.0 %
58Ni (KED)	11.307 ppb	0.8 %
59Co (KED)	1.024 ppb	2.3 %
63Cu (KED)	13.871 ppb	0.5 %
64Zn (KED)	198.164 ppb	0.6 %
69Ga (KED)	5.321 ppb	2.7 %
75As (KED)	1.096 ppb	2.6 %
80Se (KED)	1.375 ppb	11.6 %
85Rb (KED)	5.484 ppb	1.1 %
88Sr (KED)	13.903 ppb	3.8 %
107Ag (KED)	0.128 ppb	3.2 %
114Cd (KED)	0.067 ppb	8.0 %
133Cs (KED)	0.441 ppb	2.0 %
138Ba (KED)	14.877 ppb	2.1 %
139La (KED)	1.558 ppb	1.2 %
140Ce (KED)	3.106 ppb	0.9 %
141Pr (KED)	0.373 ppb	4.8 %
142Nd (KED)	1.927 ppb	2.0 %
152Sm (KED)	0.272 ppb	3.7 %
153Eu (KED)	0.054 ppb	4.2 %
158Gd (KED)	0.244 ppb	0.5 %
164Dy (KED)	0.177 ppb	3.2 %
165Ho (KED)	0.033 ppb	3.1 %
166Er (KED)	0.087 ppb	3.7 %
169Tm (KED)	0.012 ppb	2.1 %
174Yb (KED)	0.073 ppb	2.3 %
175Lu (KED)	0.010 ppb	5.5 %
205Tl (KED)	0.020 ppb	3.1 %
208Pb (KED)	1.325 ppb	3.4 %
232Th (KED)	0.391 ppb	1.2 %
238U (KED)	0.100 ppb	5.2 %

Category	Concentration average	Intensity average	Intensity RSD
9Be (KED)	0.075 ppb	9 cps	78.1 %
11B (KED)	4.806 ppb	480 cps	10.5 %
24Mg (KED)	1,416.215 ppb	587,579 cps	1.8 %
27Al (KED)	2,108.695 ppb	209,440 cps	0.6 %
51V (KED)	4.262 ppb	27,094 cps	0.9 %
52Cr (KED)	8.654 ppb	86,105 cps	2.0 %
55Mn (KED)	48.652 ppb	226,845 cps	1.9 %
56Fe (KED)	2,304.677 ppb	20,852,550 cps	1.0 %
58Ni (KED)	11.307 ppb	139,356 cps	0.8 %
59Co (KED)	1.024 ppb	20,181 cps	2.3 %

Category	Concentration average	Intensity average	Intensity RSD
63Cu (KED)	13.871 ppb	214,286 cps	0.5 %
64Zn (KED)	198.164 ppb	734,209 cps	0.6 %
69Ga (KED)	5.321 ppb	24,657 cps	2.7 %
75As (KED)	1.096 ppb	1,202 cps	2.6 %
80Se (KED)	1.375 ppb	1,076 cps	4.7 %
85Rb (KED)	5.484 ppb	22,432 cps	1.1 %
88Sr (KED)	13.903 ppb	78,573 cps	3.8 %
107Ag (KED)	0.128 ppb	5,852 cps	3.1 %
114Cd (KED)	0.067 ppb	1,413 cps	6.0 %
133Cs (KED)	0.441 ppb	9,667 cps	2.0 %
138Ba (KED)	14.877 ppb	479,185 cps	2.0 %
139La (KED)	1.558 ppb	104,278 cps	1.2 %
140Ce (KED)	3.106 ppb	284,294 cps	0.9 %
141Pr (KED)	0.373 ppb	34,708 cps	4.7 %
142Nd (KED)	1.927 ppb	75,200 cps	2.0 %
152Sm (KED)	0.272 ppb	9,937 cps	3.7 %
153Eu (KED)	0.054 ppb	3,758 cps	4.2 %
158Gd (KED)	0.244 ppb	12,807 cps	0.5 %
164Dy (KED)	0.177 ppb	9,996 cps	3.2 %
165Ho (KED)	0.033 ppb	6,593 cps	3.1 %
166Er (KED)	0.087 ppb	6,264 cps	3.6 %
169Tm (KED)	0.012 ppb	2,663 cps	2.1 %
174Yb (KED)	0.073 ppb	6,107 cps	2.3 %
175Lu (KED)	0.010 ppb	1,286 cps	5.5 %
205Tl (KED)	0.020 ppb	3,462 cps	3.1 %
208Pb (KED)	1.325 ppb	176,212 cps	3.1 %
232Th (KED)	0.391 ppb	91,201 cps	1.2 %
238U (KED)	0.100 ppb	27,159 cps	5.2 %

Sample Summary

Instrument ID: iCAP Q

Analysis index: 14

Analysis name: 286jian

Analysis started at: 8/31/2021 4:52:01 PM

User name: WINDOWS-UPCI4ER\Administrator

Category	Concentration average	Concentration RSD
9Be (KED)	0.047 ppb	34.6 %
11B (KED)	3.481 ppb	9.5 %
24Mg (KED)	1,100.504 ppb	0.8 %
27Al (KED)	1,532.225 ppb	1.4 %
51V (KED)	3.014 ppb	2.8 %
52Cr (KED)	6.009 ppb	0.4 %
55Mn (KED)	37.390 ppb	1.6 %
56Fe (KED)	1,670.222 ppb	1.6 %
58Ni (KED)	7.368 ppb	0.2 %
59Co (KED)	0.786 ppb	1.0 %
63Cu (KED)	7.465 ppb	0.1 %
64Zn (KED)	207.270 ppb	0.9 %
69Ga (KED)	3.676 ppb	1.2 %
75As (KED)	1.001 ppb	7.3 %
80Se (KED)	1.687 ppb	5.6 %
85Rb (KED)	4.266 ppb	0.9 %
88Sr (KED)	11.598 ppb	1.2 %
107Ag (KED)	0.109 ppb	1.6 %
114Cd (KED)	0.109 ppb	6.5 %
133Cs (KED)	0.339 ppb	2.8 %
138Ba (KED)	9.984 ppb	1.1 %
139La (KED)	1.138 ppb	2.5 %
140Ce (KED)	2.320 ppb	1.4 %
141Pr (KED)	0.281 ppb	3.6 %
142Nd (KED)	1.440 ppb	1.1 %
152Sm (KED)	0.200 ppb	3.0 %
153Eu (KED)	0.040 ppb	3.4 %
158Gd (KED)	0.180 ppb	3.6 %
164Dy (KED)	0.129 ppb	0.7 %
165Ho (KED)	0.024 ppb	1.9 %
166Er (KED)	0.066 ppb	1.9 %
169Tm (KED)	0.008 ppb	5.2 %
174Yb (KED)	0.049 ppb	1.5 %
175Lu (KED)	0.007 ppb	3.2 %
205Tl (KED)	0.015 ppb	4.0 %
208Pb (KED)	1.077 ppb	1.5 %
232Th (KED)	0.303 ppb	2.8 %
238U (KED)	0.075 ppb	3.4 %

Category	Concentration average	Intensity average	Intensity RSD
9Be (KED)	0.047 ppb	6 cps	34.6 %
11B (KED)	3.481 ppb	397 cps	5.2 %
24Mg (KED)	1,100.504 ppb	456,754 cps	0.8 %
27Al (KED)	1,532.225 ppb	152,206 cps	1.4 %
51V (KED)	3.014 ppb	19,157 cps	2.8 %
52Cr (KED)	6.009 ppb	59,857 cps	0.4 %
55Mn (KED)	37.390 ppb	174,378 cps	1.6 %
56Fe (KED)	1,670.222 ppb	15,113,753 cps	1.6 %
58Ni (KED)	7.368 ppb	91,627 cps	0.2 %
59Co (KED)	0.786 ppb	15,493 cps	1.0 %

Category	Concentration average	Intensity average	Intensity RSD
63Cu (KED)	7.465 ppb	116,788 cps	0.1 %
64Zn (KED)	207.270 ppb	767,620 cps	0.9 %
69Ga (KED)	3.676 ppb	17,215 cps	1.1 %
75As (KED)	1.001 ppb	1,100 cps	7.2 %
80Se (KED)	1.687 ppb	1,173 cps	2.5 %
85Rb (KED)	4.266 ppb	17,464 cps	0.9 %
88Sr (KED)	11.598 ppb	65,584 cps	1.2 %
107Ag (KED)	0.109 ppb	4,981 cps	1.6 %
114Cd (KED)	0.109 ppb	2,080 cps	5.4 %
133Cs (KED)	0.339 ppb	7,429 cps	2.8 %
138Ba (KED)	9.984 ppb	325,028 cps	1.1 %
139La (KED)	1.138 ppb	76,188 cps	2.5 %
140Ce (KED)	2.320 ppb	212,356 cps	1.4 %
141Pr (KED)	0.281 ppb	26,124 cps	3.6 %
142Nd (KED)	1.440 ppb	56,183 cps	1.1 %
152Sm (KED)	0.200 ppb	7,292 cps	3.0 %
153Eu (KED)	0.040 ppb	2,837 cps	3.4 %
158Gd (KED)	0.180 ppb	9,421 cps	3.6 %
164Dy (KED)	0.129 ppb	7,298 cps	0.7 %
165Ho (KED)	0.024 ppb	4,713 cps	1.9 %
166Er (KED)	0.066 ppb	4,815 cps	1.8 %
169Tm (KED)	0.008 ppb	1,913 cps	5.2 %
174Yb (KED)	0.049 ppb	4,157 cps	1.5 %
175Lu (KED)	0.007 ppb	886 cps	3.2 %
205Tl (KED)	0.015 ppb	2,695 cps	4.0 %
208Pb (KED)	1.077 ppb	145,869 cps	1.3 %
232Th (KED)	0.303 ppb	70,779 cps	2.8 %
238U (KED)	0.075 ppb	20,407 cps	3.4 %

Sample Summary

Instrument ID: iCAP Q

Analysis index: 15

Analysis name: 300jian

Analysis started at: 8/31/2021 4:55:10 PM

User name: WINDOWS-UPCI4ER\Administrator

Category	Concentration average	Concentration RSD
9Be (KED)	0.047 ppb	69.3 %
11B (KED)	3.180 ppb	13.4 %
24Mg (KED)	461.840 ppb	1.1 %
27Al (KED)	665.258 ppb	1.7 %
51V (KED)	1.243 ppb	2.0 %
52Cr (KED)	4.311 ppb	1.0 %
55Mn (KED)	14.914 ppb	2.5 %
56Fe (KED)	676.759 ppb	1.5 %
58Ni (KED)	3.435 ppb	0.8 %
59Co (KED)	0.373 ppb	3.0 %
63Cu (KED)	8.458 ppb	0.8 %
64Zn (KED)	202.313 ppb	1.5 %
69Ga (KED)	1.713 ppb	0.6 %
75As (KED)	0.570 ppb	19.3 %
80Se (KED)	1.900 ppb	10.4 %
85Rb (KED)	2.515 ppb	2.1 %
88Sr (KED)	5.217 ppb	2.2 %
107Ag (KED)	0.064 ppb	4.3 %
114Cd (KED)	0.118 ppb	4.4 %
133Cs (KED)	0.166 ppb	2.2 %
138Ba (KED)	5.018 ppb	2.2 %
139La (KED)	0.605 ppb	1.0 %
140Ce (KED)	1.204 ppb	2.0 %
141Pr (KED)	0.141 ppb	1.9 %
142Nd (KED)	0.708 ppb	2.4 %
152Sm (KED)	0.090 ppb	5.7 %
153Eu (KED)	0.018 ppb	2.7 %
158Gd (KED)	0.075 ppb	2.1 %
164Dy (KED)	0.052 ppb	5.3 %
165Ho (KED)	0.011 ppb	0.2 %
166Er (KED)	0.023 ppb	4.5 %
169Tm (KED)	0.003 ppb	7.6 %
174Yb (KED)	0.021 ppb	10.2 %
175Lu (KED)	0.003 ppb	6.5 %
205Tl (KED)	0.007 ppb	2.1 %
208Pb (KED)	0.972 ppb	1.3 %
232Th (KED)	0.153 ppb	3.9 %
238U (KED)	0.036 ppb	4.5 %

Category	Concentration average	Intensity average	Intensity RSD
9Be (KED)	0.047 ppb	6 cps	69.3 %
11B (KED)	3.180 ppb	378 cps	7.1 %
24Mg (KED)	461.840 ppb	192,102 cps	1.1 %
27Al (KED)	665.258 ppb	66,130 cps	1.7 %
51V (KED)	1.243 ppb	7,900 cps	2.0 %
52Cr (KED)	4.311 ppb	43,006 cps	1.0 %
55Mn (KED)	14.914 ppb	69,671 cps	2.5 %
56Fe (KED)	676.759 ppb	6,127,637 cps	1.5 %
58Ni (KED)	3.435 ppb	43,973 cps	0.8 %
59Co (KED)	0.373 ppb	7,357 cps	3.0 %

Category	Concentration average	Intensity average	Intensity RSD
63Cu (KED)	8.458 ppb	131,899 cps	0.8 %
64Zn (KED)	202.313 ppb	749,430 cps	1.4 %
69Ga (KED)	1.713 ppb	8,332 cps	0.5 %
75As (KED)	0.570 ppb	637 cps	18.6 %
80Se (KED)	1.900 ppb	1,240 cps	5.0 %
85Rb (KED)	2.515 ppb	10,320 cps	2.1 %
88Sr (KED)	5.217 ppb	29,616 cps	2.2 %
107Ag (KED)	0.064 ppb	2,994 cps	4.1 %
114Cd (KED)	0.118 ppb	2,232 cps	3.7 %
133Cs (KED)	0.166 ppb	3,647 cps	2.2 %
138Ba (KED)	5.018 ppb	168,520 cps	2.1 %
139La (KED)	0.605 ppb	40,526 cps	1.0 %
140Ce (KED)	1.204 ppb	110,270 cps	2.0 %
141Pr (KED)	0.141 ppb	13,124 cps	1.9 %
142Nd (KED)	0.708 ppb	27,649 cps	2.4 %
152Sm (KED)	0.090 ppb	3,269 cps	5.6 %
153Eu (KED)	0.018 ppb	1,280 cps	2.7 %
158Gd (KED)	0.075 ppb	3,938 cps	2.1 %
164Dy (KED)	0.052 ppb	2,940 cps	5.3 %
165Ho (KED)	0.011 ppb	2,099 cps	0.2 %
166Er (KED)	0.023 ppb	1,809 cps	3.9 %
169Tm (KED)	0.003 ppb	774 cps	7.6 %
174Yb (KED)	0.021 ppb	1,777 cps	10.2 %
175Lu (KED)	0.003 ppb	390 cps	6.5 %
205Tl (KED)	0.007 ppb	1,290 cps	2.1 %
208Pb (KED)	0.972 ppb	133,023 cps	1.2 %
232Th (KED)	0.153 ppb	35,804 cps	3.9 %
238U (KED)	0.036 ppb	9,834 cps	4.5 %

Sample Summary

Instrument ID: iCAP Q

Analysis index: 16

Analysis name: 298jian

Analysis started at: 8/31/2021 4:58:28 PM

User name: WINDOWS-UPCI4ER\Administrator

Category	Concentration average	Concentration RSD
9Be (KED)	0.066 ppb	89.2 %
11B (KED)	4.558 ppb	8.9 %
24Mg (KED)	1,403.566 ppb	2.3 %
27Al (KED)	2,065.812 ppb	0.5 %
51V (KED)	4.394 ppb	1.1 %
52Cr (KED)	7.068 ppb	0.8 %
55Mn (KED)	47.562 ppb	2.6 %
56Fe (KED)	2,312.935 ppb	2.4 %
58Ni (KED)	10.630 ppb	0.9 %
59Co (KED)	1.075 ppb	0.2 %
63Cu (KED)	8.821 ppb	2.2 %
64Zn (KED)	185.580 ppb	0.7 %
69Ga (KED)	4.346 ppb	4.7 %
75As (KED)	1.123 ppb	6.9 %
80Se (KED)	1.340 ppb	34.6 %
85Rb (KED)	6.023 ppb	1.4 %
88Sr (KED)	14.005 ppb	1.8 %
107Ag (KED)	0.060 ppb	3.4 %
114Cd (KED)	0.090 ppb	2.4 %
133Cs (KED)	0.444 ppb	0.9 %
138Ba (KED)	12.594 ppb	2.1 %
139La (KED)	1.854 ppb	2.8 %
140Ce (KED)	3.726 ppb	4.0 %
141Pr (KED)	0.433 ppb	1.9 %
142Nd (KED)	2.225 ppb	3.2 %
152Sm (KED)	0.301 ppb	1.4 %
153Eu (KED)	0.060 ppb	3.0 %
158Gd (KED)	0.255 ppb	4.2 %
164Dy (KED)	0.180 ppb	3.3 %
165Ho (KED)	0.033 ppb	3.7 %
166Er (KED)	0.092 ppb	1.7 %
169Tm (KED)	0.012 ppb	4.4 %
174Yb (KED)	0.078 ppb	5.2 %
175Lu (KED)	0.012 ppb	8.8 %
205Tl (KED)	0.020 ppb	2.3 %
208Pb (KED)	1.627 ppb	1.9 %
232Th (KED)	0.407 ppb	2.6 %
238U (KED)	0.108 ppb	4.7 %

Category	Concentration average	Intensity average	Intensity RSD
9Be (KED)	0.066 ppb	8 cps	89.2 %
11B (KED)	4.558 ppb	464 cps	5.5 %
24Mg (KED)	1,403.566 ppb	582,338 cps	2.3 %
27Al (KED)	2,065.812 ppb	205,183 cps	0.5 %
51V (KED)	4.394 ppb	27,931 cps	1.1 %
52Cr (KED)	7.068 ppb	70,370 cps	0.8 %
55Mn (KED)	47.562 ppb	221,768 cps	2.6 %
56Fe (KED)	2,312.935 ppb	20,927,247 cps	2.4 %
58Ni (KED)	10.630 ppb	131,156 cps	0.9 %
59Co (KED)	1.075 ppb	21,198 cps	0.2 %

Category	Concentration average	Intensity average	Intensity RSD
63Cu (KED)	8.821 ppb	137,431 cps	2.1 %
64Zn (KED)	185.580 ppb	688,032 cps	0.7 %
69Ga (KED)	4.346 ppb	20,244 cps	4.6 %
75As (KED)	1.123 ppb	1,232 cps	6.8 %
80Se (KED)	1.340 ppb	1,064 cps	13.6 %
85Rb (KED)	6.023 ppb	24,633 cps	1.4 %
88Sr (KED)	14.005 ppb	79,150 cps	1.8 %
107Ag (KED)	0.060 ppb	2,836 cps	3.2 %
114Cd (KED)	0.090 ppb	1,786 cps	1.9 %
133Cs (KED)	0.444 ppb	9,725 cps	0.9 %
138Ba (KED)	12.594 ppb	407,257 cps	2.0 %
139La (KED)	1.854 ppb	124,020 cps	2.8 %
140Ce (KED)	3.726 ppb	340,968 cps	4.0 %
141Pr (KED)	0.433 ppb	40,305 cps	1.9 %
142Nd (KED)	2.225 ppb	86,807 cps	3.2 %
152Sm (KED)	0.301 ppb	10,994 cps	1.4 %
153Eu (KED)	0.060 ppb	4,173 cps	3.0 %
158Gd (KED)	0.255 ppb	13,385 cps	4.2 %
164Dy (KED)	0.180 ppb	10,142 cps	3.3 %
165Ho (KED)	0.033 ppb	6,628 cps	3.7 %
166Er (KED)	0.092 ppb	6,597 cps	1.7 %
169Tm (KED)	0.012 ppb	2,831 cps	4.4 %
174Yb (KED)	0.078 ppb	6,537 cps	5.2 %
175Lu (KED)	0.012 ppb	1,437 cps	8.8 %
205Tl (KED)	0.020 ppb	3,492 cps	2.3 %
208Pb (KED)	1.627 ppb	213,293 cps	1.7 %
232Th (KED)	0.407 ppb	94,897 cps	2.6 %
238U (KED)	0.108 ppb	29,279 cps	4.6 %

Sample Summary

Instrument ID: iCAP Q

Analysis index: 17

Analysis name: 17020jian

Analysis started at: 8/31/2021 5:01:36 PM

User name: WINDOWS-UPCI4ER\Administrator

Category	Concentration average	Concentration RSD
9Be (KED)	0.038 ppb	86.6 %
11B (KED)	5.142 ppb	6.7 %
24Mg (KED)	1,004.901 ppb	1.1 %
27Al (KED)	1,393.701 ppb	0.7 %
51V (KED)	2.804 ppb	2.6 %
52Cr (KED)	6.402 ppb	0.8 %
55Mn (KED)	33.862 ppb	1.2 %
56Fe (KED)	1,509.940 ppb	0.8 %
58Ni (KED)	7.285 ppb	1.7 %
59Co (KED)	0.841 ppb	2.1 %
63Cu (KED)	10.904 ppb	0.5 %
64Zn (KED)	219.046 ppb	0.2 %
69Ga (KED)	3.180 ppb	1.3 %
75As (KED)	0.933 ppb	11.2 %
80Se (KED)	1.893 ppb	12.3 %
85Rb (KED)	4.870 ppb	2.1 %
88Sr (KED)	12.487 ppb	1.9 %
107Ag (KED)	0.120 ppb	2.1 %
114Cd (KED)	0.157 ppb	5.6 %
133Cs (KED)	0.293 ppb	0.1 %
138Ba (KED)	8.791 ppb	3.1 %
139La (KED)	1.131 ppb	3.3 %
140Ce (KED)	2.304 ppb	2.6 %
141Pr (KED)	0.264 ppb	2.3 %
142Nd (KED)	1.382 ppb	1.9 %
152Sm (KED)	0.178 ppb	5.0 %
153Eu (KED)	0.033 ppb	5.4 %
158Gd (KED)	0.159 ppb	6.3 %
164Dy (KED)	0.115 ppb	6.0 %
165Ho (KED)	0.022 ppb	4.3 %
166Er (KED)	0.054 ppb	4.3 %
169Tm (KED)	0.008 ppb	3.1 %
174Yb (KED)	0.047 ppb	8.0 %
175Lu (KED)	0.007 ppb	9.6 %
205Tl (KED)	0.016 ppb	5.2 %
208Pb (KED)	1.426 ppb	1.4 %
232Th (KED)	0.311 ppb	1.4 %
238U (KED)	0.070 ppb	0.9 %

Category	Concentration average	Intensity average	Intensity RSD
9Be (KED)	0.038 ppb	4 cps	86.6 %
11B (KED)	5.142 ppb	501 cps	4.3 %
24Mg (KED)	1,004.901 ppb	417,137 cps	1.1 %
27Al (KED)	1,393.701 ppb	138,453 cps	0.7 %
51V (KED)	2.804 ppb	17,825 cps	2.6 %
52Cr (KED)	6.402 ppb	63,758 cps	0.8 %
55Mn (KED)	33.862 ppb	157,944 cps	1.2 %
56Fe (KED)	1,509.940 ppb	13,663,961 cps	0.8 %
58Ni (KED)	7.285 ppb	90,630 cps	1.6 %
59Co (KED)	0.841 ppb	16,591 cps	2.1 %

Category	Concentration average	Intensity average	Intensity RSD
63Cu (KED)	10.904 ppb	169,126 cps	0.5 %
64Zn (KED)	219.046 ppb	810,832 cps	0.2 %
69Ga (KED)	3.180 ppb	14,969 cps	1.3 %
75As (KED)	0.933 ppb	1,027 cps	10.9 %
80Se (KED)	1.893 ppb	1,238 cps	5.9 %
85Rb (KED)	4.870 ppb	19,928 cps	2.1 %
88Sr (KED)	12.487 ppb	70,592 cps	1.9 %
107Ag (KED)	0.120 ppb	5,471 cps	2.1 %
114Cd (KED)	0.157 ppb	2,848 cps	4.9 %
133Cs (KED)	0.293 ppb	6,422 cps	0.1 %
138Ba (KED)	8.791 ppb	287,425 cps	3.0 %
139La (KED)	1.131 ppb	75,663 cps	3.3 %
140Ce (KED)	2.304 ppb	210,940 cps	2.6 %
141Pr (KED)	0.264 ppb	24,627 cps	2.3 %
142Nd (KED)	1.382 ppb	53,957 cps	1.9 %
152Sm (KED)	0.178 ppb	6,497 cps	5.0 %
153Eu (KED)	0.033 ppb	2,316 cps	5.4 %
158Gd (KED)	0.159 ppb	8,362 cps	6.3 %
164Dy (KED)	0.115 ppb	6,503 cps	6.0 %
165Ho (KED)	0.022 ppb	4,344 cps	4.3 %
166Er (KED)	0.054 ppb	3,985 cps	4.1 %
169Tm (KED)	0.008 ppb	1,722 cps	3.1 %
174Yb (KED)	0.047 ppb	3,966 cps	8.0 %
175Lu (KED)	0.007 ppb	843 cps	9.6 %
205Tl (KED)	0.016 ppb	2,751 cps	5.2 %
208Pb (KED)	1.426 ppb	188,655 cps	1.3 %
232Th (KED)	0.311 ppb	72,657 cps	1.4 %
238U (KED)	0.070 ppb	19,166 cps	0.9 %

Sample Summary

Instrument ID: iCAP Q

Analysis index: 18

Analysis name: 288jian

Analysis started at: 8/31/2021 5:04:40 PM

User name: WINDOWS-UPCI4ER\Administrator

Category	Concentration average	Concentration RSD
9Be (KED)	0.094 ppb	34.6 %
11B (KED)	7.739 ppb	8.9 %
24Mg (KED)	1,322.877 ppb	1.1 %
27Al (KED)	1,891.084 ppb	1.0 %
51V (KED)	4.480 ppb	1.2 %
52Cr (KED)	8.056 ppb	0.7 %
55Mn (KED)	44.679 ppb	0.4 %
56Fe (KED)	2,301.961 ppb	0.7 %
58Ni (KED)	9.758 ppb	0.3 %
59Co (KED)	1.033 ppb	0.5 %
63Cu (KED)	14.388 ppb	0.1 %
64Zn (KED)	202.056 ppb	1.0 %
69Ga (KED)	3.887 ppb	2.6 %
75As (KED)	1.031 ppb	1.8 %
80Se (KED)	2.042 ppb	20.6 %
85Rb (KED)	4.937 ppb	0.5 %
88Sr (KED)	11.988 ppb	0.2 %
107Ag (KED)	0.042 ppb	2.0 %
114Cd (KED)	0.126 ppb	4.1 %
133Cs (KED)	0.486 ppb	1.5 %
138Ba (KED)	11.061 ppb	1.5 %
139La (KED)	1.536 ppb	1.6 %
140Ce (KED)	3.038 ppb	1.3 %
141Pr (KED)	0.386 ppb	1.1 %
142Nd (KED)	1.945 ppb	0.7 %
152Sm (KED)	0.274 ppb	2.6 %
153Eu (KED)	0.051 ppb	3.6 %
158Gd (KED)	0.248 ppb	4.7 %
164Dy (KED)	0.188 ppb	4.6 %
165Ho (KED)	0.035 ppb	2.0 %
166Er (KED)	0.094 ppb	0.9 %
169Tm (KED)	0.014 ppb	5.4 %
174Yb (KED)	0.081 ppb	4.9 %
175Lu (KED)	0.012 ppb	6.7 %
205Tl (KED)	0.017 ppb	3.6 %
208Pb (KED)	1.121 ppb	2.8 %
232Th (KED)	0.364 ppb	1.9 %
238U (KED)	0.090 ppb	3.7 %

Category	Concentration average	Intensity average	Intensity RSD
9Be (KED)	0.094 ppb	11 cps	34.6 %
11B (KED)	7.739 ppb	664 cps	6.5 %
24Mg (KED)	1,322.877 ppb	548,901 cps	1.1 %
27Al (KED)	1,891.084 ppb	187,835 cps	1.0 %
51V (KED)	4.480 ppb	28,477 cps	1.2 %
52Cr (KED)	8.056 ppb	80,169 cps	0.7 %
55Mn (KED)	44.679 ppb	208,336 cps	0.4 %
56Fe (KED)	2,301.961 ppb	20,827,986 cps	0.7 %
58Ni (KED)	9.758 ppb	120,595 cps	0.3 %
59Co (KED)	1.033 ppb	20,358 cps	0.5 %

Category	Concentration average	Intensity average	Intensity RSD
63Cu (KED)	14.388 ppb	222,145 cps	0.1 %
64Zn (KED)	202.056 ppb	748,488 cps	0.9 %
69Ga (KED)	3.887 ppb	18,171 cps	2.5 %
75As (KED)	1.031 ppb	1,132 cps	1.8 %
80Se (KED)	2.042 ppb	1,285 cps	10.3 %
85Rb (KED)	4.937 ppb	20,200 cps	0.5 %
88Sr (KED)	11.988 ppb	67,783 cps	0.2 %
107Ag (KED)	0.042 ppb	2,052 cps	1.8 %
114Cd (KED)	0.126 ppb	2,347 cps	3.5 %
133Cs (KED)	0.486 ppb	10,652 cps	1.5 %
138Ba (KED)	11.061 ppb	358,949 cps	1.4 %
139La (KED)	1.536 ppb	102,744 cps	1.6 %
140Ce (KED)	3.038 ppb	278,028 cps	1.3 %
141Pr (KED)	0.386 ppb	35,896 cps	1.1 %
142Nd (KED)	1.945 ppb	75,896 cps	0.7 %
152Sm (KED)	0.274 ppb	9,995 cps	2.6 %
153Eu (KED)	0.051 ppb	3,561 cps	3.6 %
158Gd (KED)	0.248 ppb	13,029 cps	4.7 %
164Dy (KED)	0.188 ppb	10,600 cps	4.6 %
165Ho (KED)	0.035 ppb	6,921 cps	2.0 %
166Er (KED)	0.094 ppb	6,744 cps	0.9 %
169Tm (KED)	0.014 ppb	3,107 cps	5.4 %
174Yb (KED)	0.081 ppb	6,844 cps	4.9 %
175Lu (KED)	0.012 ppb	1,538 cps	6.7 %
205Tl (KED)	0.017 ppb	3,027 cps	3.6 %
208Pb (KED)	1.121 ppb	151,280 cps	2.6 %
232Th (KED)	0.364 ppb	84,972 cps	1.9 %
238U (KED)	0.090 ppb	24,352 cps	3.7 %

Sample Summary

Instrument ID: iCAP Q

Analysis index: 19

Analysis name: 282jian

Analysis started at: 8/31/2021 5:08:00 PM

User name: WINDOWS-UPCI4ER\Administrator

Category	Concentration average	Concentration RSD
9Be (KED)	0.066 ppb	49.5 %
11B (KED)	5.424 ppb	8.8 %
24Mg (KED)	1,188.106 ppb	2.3 %
27Al (KED)	1,721.812 ppb	0.5 %
51V (KED)	3.415 ppb	2.2 %
52Cr (KED)	6.868 ppb	0.6 %
55Mn (KED)	41.143 ppb	2.8 %
56Fe (KED)	1,847.231 ppb	0.4 %
58Ni (KED)	8.304 ppb	1.0 %
59Co (KED)	0.870 ppb	0.3 %
63Cu (KED)	9.550 ppb	0.8 %
64Zn (KED)	209.099 ppb	0.4 %
69Ga (KED)	3.668 ppb	2.5 %
75As (KED)	1.027 ppb	3.6 %
80Se (KED)	2.120 ppb	7.7 %
85Rb (KED)	4.587 ppb	1.1 %
88Sr (KED)	12.284 ppb	3.4 %
107Ag (KED)	0.059 ppb	4.2 %
114Cd (KED)	0.157 ppb	3.3 %
133Cs (KED)	0.370 ppb	4.3 %
138Ba (KED)	9.492 ppb	5.6 %
139La (KED)	1.309 ppb	4.6 %
140Ce (KED)	2.726 ppb	2.9 %
141Pr (KED)	0.308 ppb	2.0 %
142Nd (KED)	1.645 ppb	4.2 %
152Sm (KED)	0.214 ppb	5.1 %
153Eu (KED)	0.044 ppb	2.9 %
158Gd (KED)	0.188 ppb	5.7 %
164Dy (KED)	0.130 ppb	6.4 %
165Ho (KED)	0.024 ppb	6.3 %
166Er (KED)	0.061 ppb	4.3 %
169Tm (KED)	0.009 ppb	4.9 %
174Yb (KED)	0.053 ppb	10.5 %
175Lu (KED)	0.008 ppb	7.0 %
205Tl (KED)	0.015 ppb	3.4 %
208Pb (KED)	1.218 ppb	5.8 %
232Th (KED)	0.312 ppb	5.8 %
238U (KED)	0.075 ppb	4.7 %

Category	Concentration average	Intensity average	Intensity RSD
9Be (KED)	0.066 ppb	8 cps	49.5 %
11B (KED)	5.424 ppb	519 cps	5.8 %
24Mg (KED)	1,188.106 ppb	493,055 cps	2.3 %
27Al (KED)	1,721.812 ppb	171,029 cps	0.5 %
51V (KED)	3.415 ppb	21,709 cps	2.2 %
52Cr (KED)	6.868 ppb	68,380 cps	0.6 %
55Mn (KED)	41.143 ppb	191,865 cps	2.8 %
56Fe (KED)	1,847.231 ppb	16,714,838 cps	0.4 %
58Ni (KED)	8.304 ppb	102,972 cps	1.0 %
59Co (KED)	0.870 ppb	17,157 cps	0.3 %

Category	Concentration average	Intensity average	Intensity RSD
63Cu (KED)	9.550 ppb	148,520 cps	0.8 %
64Zn (KED)	209.099 ppb	774,331 cps	0.4 %
69Ga (KED)	3.668 ppb	17,176 cps	2.4 %
75As (KED)	1.027 ppb	1,128 cps	3.5 %
80Se (KED)	2.120 ppb	1,309 cps	3.9 %
85Rb (KED)	4.587 ppb	18,773 cps	1.1 %
88Sr (KED)	12.284 ppb	69,450 cps	3.4 %
107Ag (KED)	0.059 ppb	2,770 cps	3.9 %
114Cd (KED)	0.157 ppb	2,839 cps	2.9 %
133Cs (KED)	0.370 ppb	8,110 cps	4.3 %
138Ba (KED)	9.492 ppb	309,501 cps	5.5 %
139La (KED)	1.309 ppb	87,564 cps	4.6 %
140Ce (KED)	2.726 ppb	249,490 cps	2.9 %
141Pr (KED)	0.308 ppb	28,690 cps	2.0 %
142Nd (KED)	1.645 ppb	64,191 cps	4.2 %
152Sm (KED)	0.214 ppb	7,820 cps	5.1 %
153Eu (KED)	0.044 ppb	3,085 cps	2.9 %
158Gd (KED)	0.188 ppb	9,881 cps	5.6 %
164Dy (KED)	0.130 ppb	7,329 cps	6.4 %
165Ho (KED)	0.024 ppb	4,858 cps	6.3 %
166Er (KED)	0.061 ppb	4,472 cps	4.1 %
169Tm (KED)	0.009 ppb	2,068 cps	4.8 %
174Yb (KED)	0.053 ppb	4,487 cps	10.5 %
175Lu (KED)	0.008 ppb	964 cps	7.0 %
205Tl (KED)	0.015 ppb	2,578 cps	3.4 %
208Pb (KED)	1.218 ppb	163,108 cps	5.3 %
232Th (KED)	0.312 ppb	72,818 cps	5.8 %
238U (KED)	0.075 ppb	20,304 cps	4.7 %

Sample Summary

Instrument ID: iCAP Q

Analysis index: 20

Analysis name: 17013jian

Analysis started at: 8/31/2021 5:11:29 PM

User name: WINDOWS-UPCI4ER\Administrator

Category	Concentration average	Concentration RSD
9Be (KED)	0.038 ppb	43.3 %
11B (KED)	10.743 ppb	15.0 %
24Mg (KED)	1,718.639 ppb	2.6 %
27Al (KED)	1,332.363 ppb	2.0 %
51V (KED)	2.764 ppb	2.9 %
52Cr (KED)	6.674 ppb	3.6 %
55Mn (KED)	38.769 ppb	2.8 %
56Fe (KED)	1,473.518 ppb	2.1 %
58Ni (KED)	6.320 ppb	1.0 %
59Co (KED)	0.717 ppb	3.4 %
63Cu (KED)	12.635 ppb	2.9 %
64Zn (KED)	182.246 ppb	1.6 %
69Ga (KED)	3.645 ppb	1.8 %
75As (KED)	0.705 ppb	6.0 %
80Se (KED)	1.790 ppb	7.6 %
85Rb (KED)	4.297 ppb	0.7 %
88Sr (KED)	21.704 ppb	1.3 %
107Ag (KED)	0.575 ppb	2.5 %
114Cd (KED)	0.110 ppb	2.7 %
133Cs (KED)	0.291 ppb	2.9 %
138Ba (KED)	9.750 ppb	0.9 %
139La (KED)	1.027 ppb	3.0 %
140Ce (KED)	2.123 ppb	0.6 %
141Pr (KED)	0.239 ppb	1.4 %
142Nd (KED)	1.261 ppb	1.8 %
152Sm (KED)	0.168 ppb	2.9 %
153Eu (KED)	0.034 ppb	5.1 %
158Gd (KED)	0.146 ppb	3.2 %
164Dy (KED)	0.106 ppb	2.4 %
165Ho (KED)	0.021 ppb	4.3 %
166Er (KED)	0.053 ppb	4.8 %
169Tm (KED)	0.007 ppb	3.6 %
174Yb (KED)	0.046 ppb	2.0 %
175Lu (KED)	0.006 ppb	2.8 %
205Tl (KED)	0.015 ppb	2.9 %
208Pb (KED)	0.983 ppb	2.1 %
232Th (KED)	0.230 ppb	2.1 %
238U (KED)	0.072 ppb	1.5 %

Category	Concentration average	Intensity average	Intensity RSD
9Be (KED)	0.038 ppb	4 cps	43.3 %
11B (KED)	10.743 ppb	853 cps	11.9 %
24Mg (KED)	1,718.639 ppb	712,898 cps	2.6 %
27Al (KED)	1,332.363 ppb	132,363 cps	2.0 %
51V (KED)	2.764 ppb	17,570 cps	2.9 %
52Cr (KED)	6.674 ppb	66,457 cps	3.5 %
55Mn (KED)	38.769 ppb	180,804 cps	2.8 %
56Fe (KED)	1,473.518 ppb	13,334,517 cps	2.1 %
58Ni (KED)	6.320 ppb	78,939 cps	1.0 %
59Co (KED)	0.717 ppb	14,131 cps	3.4 %

Category	Concentration average	Intensity average	Intensity RSD
63Cu (KED)	12.635 ppb	195,466 cps	2.9 %
64Zn (KED)	182.246 ppb	675,797 cps	1.6 %
69Ga (KED)	3.645 ppb	17,072 cps	1.8 %
75As (KED)	0.705 ppb	781 cps	5.8 %
80Se (KED)	1.790 ppb	1,206 cps	3.6 %
85Rb (KED)	4.297 ppb	17,588 cps	0.7 %
88Sr (KED)	21.704 ppb	122,548 cps	1.3 %
107Ag (KED)	0.575 ppb	25,606 cps	2.5 %
114Cd (KED)	0.110 ppb	2,106 cps	2.2 %
133Cs (KED)	0.291 ppb	6,389 cps	2.9 %
138Ba (KED)	9.750 ppb	317,647 cps	0.9 %
139La (KED)	1.027 ppb	68,764 cps	3.0 %
140Ce (KED)	2.123 ppb	194,317 cps	0.6 %
141Pr (KED)	0.239 ppb	22,242 cps	1.4 %
142Nd (KED)	1.261 ppb	49,228 cps	1.8 %
152Sm (KED)	0.168 ppb	6,118 cps	2.9 %
153Eu (KED)	0.034 ppb	2,367 cps	5.1 %
158Gd (KED)	0.146 ppb	7,645 cps	3.2 %
164Dy (KED)	0.106 ppb	5,998 cps	2.4 %
165Ho (KED)	0.021 ppb	4,162 cps	4.3 %
166Er (KED)	0.053 ppb	3,873 cps	4.5 %
169Tm (KED)	0.007 ppb	1,661 cps	3.6 %
174Yb (KED)	0.046 ppb	3,829 cps	2.0 %
175Lu (KED)	0.006 ppb	787 cps	2.8 %
205Tl (KED)	0.015 ppb	2,569 cps	2.9 %
208Pb (KED)	0.983 ppb	134,291 cps	1.9 %
232Th (KED)	0.230 ppb	53,832 cps	2.1 %
238U (KED)	0.072 ppb	19,473 cps	1.5 %

Sample Summary

Instrument ID: iCAP Q

Analysis index: 21

Analysis name: 284jian

Analysis started at: 8/31/2021 5:14:49 PM

User name: WINDOWS-UPCI4ER\Administrator

Category	Concentration average	Concentration RSD
9Be (KED)	0.047 ppb	34.6 %
11B (KED)	7.385 ppb	6.8 %
24Mg (KED)	883.181 ppb	1.1 %
27Al (KED)	1,263.081 ppb	0.9 %
51V (KED)	2.522 ppb	2.4 %
52Cr (KED)	6.172 ppb	0.8 %
55Mn (KED)	30.098 ppb	1.3 %
56Fe (KED)	1,418.465 ppb	0.6 %
58Ni (KED)	6.872 ppb	1.5 %
59Co (KED)	0.676 ppb	1.2 %
63Cu (KED)	9.588 ppb	0.6 %
64Zn (KED)	182.263 ppb	0.4 %
69Ga (KED)	2.941 ppb	1.5 %
75As (KED)	0.934 ppb	5.6 %
80Se (KED)	1.911 ppb	8.7 %
85Rb (KED)	4.601 ppb	1.5 %
88Sr (KED)	10.314 ppb	1.7 %
107Ag (KED)	0.071 ppb	5.4 %
114Cd (KED)	0.101 ppb	2.6 %
133Cs (KED)	0.277 ppb	4.9 %
138Ba (KED)	7.995 ppb	1.2 %
139La (KED)	0.948 ppb	2.5 %
140Ce (KED)	1.957 ppb	1.2 %
141Pr (KED)	0.228 ppb	1.3 %
142Nd (KED)	1.197 ppb	2.1 %
152Sm (KED)	0.166 ppb	6.4 %
153Eu (KED)	0.031 ppb	6.4 %
158Gd (KED)	0.138 ppb	2.7 %
164Dy (KED)	0.102 ppb	3.0 %
165Ho (KED)	0.019 ppb	2.3 %
166Er (KED)	0.048 ppb	5.4 %
169Tm (KED)	0.007 ppb	1.5 %
174Yb (KED)	0.040 ppb	2.4 %
175Lu (KED)	0.006 ppb	17.0 %
205Tl (KED)	0.014 ppb	2.3 %
208Pb (KED)	1.346 ppb	1.9 %
232Th (KED)	0.226 ppb	2.2 %
238U (KED)	0.065 ppb	1.9 %

Category	Concentration average	Intensity average	Intensity RSD
9Be (KED)	0.047 ppb	6 cps	34.6 %
11B (KED)	7.385 ppb	642 cps	4.9 %
24Mg (KED)	883.181 ppb	366,699 cps	1.1 %
27Al (KED)	1,263.081 ppb	125,484 cps	0.9 %
51V (KED)	2.522 ppb	16,035 cps	2.4 %
52Cr (KED)	6.172 ppb	61,474 cps	0.8 %
55Mn (KED)	30.098 ppb	140,412 cps	1.3 %
56Fe (KED)	1,418.465 ppb	12,836,553 cps	0.6 %
58Ni (KED)	6.872 ppb	85,623 cps	1.5 %
59Co (KED)	0.676 ppb	13,328 cps	1.2 %

Category	Concentration average	Intensity average	Intensity RSD
63Cu (KED)	9.588 ppb	149,094 cps	0.6 %
64Zn (KED)	182.263 ppb	675,860 cps	0.4 %
69Ga (KED)	2.941 ppb	13,890 cps	1.4 %
75As (KED)	0.934 ppb	1,028 cps	5.4 %
80Se (KED)	1.911 ppb	1,243 cps	4.2 %
85Rb (KED)	4.601 ppb	18,832 cps	1.5 %
88Sr (KED)	10.314 ppb	58,349 cps	1.7 %
107Ag (KED)	0.071 ppb	3,303 cps	5.1 %
114Cd (KED)	0.101 ppb	1,952 cps	2.2 %
133Cs (KED)	0.277 ppb	6,074 cps	4.9 %
138Ba (KED)	7.995 ppb	262,326 cps	1.2 %
139La (KED)	0.948 ppb	63,442 cps	2.5 %
140Ce (KED)	1.957 ppb	179,148 cps	1.2 %
141Pr (KED)	0.228 ppb	21,228 cps	1.3 %
142Nd (KED)	1.197 ppb	46,711 cps	2.1 %
152Sm (KED)	0.166 ppb	6,038 cps	6.4 %
153Eu (KED)	0.031 ppb	2,154 cps	6.4 %
158Gd (KED)	0.138 ppb	7,238 cps	2.7 %
164Dy (KED)	0.102 ppb	5,771 cps	3.0 %
165Ho (KED)	0.019 ppb	3,766 cps	2.3 %
166Er (KED)	0.048 ppb	3,557 cps	5.1 %
169Tm (KED)	0.007 ppb	1,557 cps	1.5 %
174Yb (KED)	0.040 ppb	3,339 cps	2.4 %
175Lu (KED)	0.006 ppb	764 cps	17.0 %
205Tl (KED)	0.014 ppb	2,367 cps	2.3 %
208Pb (KED)	1.346 ppb	178,851 cps	1.7 %
232Th (KED)	0.226 ppb	52,847 cps	2.2 %
238U (KED)	0.065 ppb	17,601 cps	1.9 %

Sample Summary

Instrument ID: iCAP Q

Analysis index: 22

Analysis name: 294jian

Analysis started at: 8/31/2021 5:18:34 PM

User name: WINDOWS-UPCI4ER\Administrator

Category	Concentration average	Concentration RSD
9Be (KED)	0.038 ppb	86.6 %
11B (KED)	2.597 ppb	25.7 %
24Mg (KED)	604.941 ppb	0.7 %
27Al (KED)	850.614 ppb	1.7 %
51V (KED)	1.498 ppb	1.5 %
52Cr (KED)	4.885 ppb	1.2 %
55Mn (KED)	18.753 ppb	0.8 %
56Fe (KED)	768.279 ppb	1.3 %
58Ni (KED)	3.697 ppb	0.5 %
59Co (KED)	0.458 ppb	1.5 %
63Cu (KED)	7.492 ppb	1.6 %
64Zn (KED)	216.754 ppb	0.6 %
69Ga (KED)	2.158 ppb	1.5 %
75As (KED)	0.582 ppb	4.3 %
80Se (KED)	1.971 ppb	5.7 %
85Rb (KED)	4.262 ppb	0.9 %
88Sr (KED)	8.064 ppb	0.6 %
107Ag (KED)	0.140 ppb	2.5 %
114Cd (KED)	0.152 ppb	2.9 %
133Cs (KED)	0.168 ppb	1.7 %
138Ba (KED)	6.088 ppb	0.9 %
139La (KED)	0.552 ppb	1.8 %
140Ce (KED)	1.132 ppb	1.9 %
141Pr (KED)	0.125 ppb	3.5 %
142Nd (KED)	0.678 ppb	1.4 %
152Sm (KED)	0.095 ppb	3.4 %
153Eu (KED)	0.018 ppb	8.2 %
158Gd (KED)	0.080 ppb	1.7 %
164Dy (KED)	0.057 ppb	6.0 %
165Ho (KED)	0.011 ppb	2.0 %
166Er (KED)	0.025 ppb	6.9 %
169Tm (KED)	0.004 ppb	8.1 %
174Yb (KED)	0.023 ppb	7.1 %
175Lu (KED)	0.003 ppb	7.3 %
205Tl (KED)	0.011 ppb	7.8 %
208Pb (KED)	1.039 ppb	1.6 %
232Th (KED)	0.155 ppb	2.0 %
238U (KED)	0.044 ppb	1.9 %

Category	Concentration average	Intensity average	Intensity RSD
9Be (KED)	0.038 ppb	4 cps	86.6 %
11B (KED)	2.597 ppb	341 cps	12.3 %
24Mg (KED)	604.941 ppb	251,401 cps	0.7 %
27Al (KED)	850.614 ppb	84,533 cps	1.7 %
51V (KED)	1.498 ppb	9,520 cps	1.5 %
52Cr (KED)	4.885 ppb	48,697 cps	1.2 %
55Mn (KED)	18.753 ppb	87,558 cps	0.8 %
56Fe (KED)	768.279 ppb	6,955,456 cps	1.3 %
58Ni (KED)	3.697 ppb	47,149 cps	0.5 %
59Co (KED)	0.458 ppb	9,043 cps	1.5 %

Category	Concentration average	Intensity average	Intensity RSD
63Cu (KED)	7.492 ppb	117,200 cps	1.6 %
64Zn (KED)	216.754 ppb	802,420 cps	0.6 %
69Ga (KED)	2.158 ppb	10,345 cps	1.4 %
75As (KED)	0.582 ppb	649 cps	4.2 %
80Se (KED)	1.971 ppb	1,262 cps	2.8 %
85Rb (KED)	4.262 ppb	17,446 cps	0.9 %
88Sr (KED)	8.064 ppb	45,662 cps	0.6 %
107Ag (KED)	0.140 ppb	6,373 cps	2.5 %
114Cd (KED)	0.152 ppb	2,764 cps	2.5 %
133Cs (KED)	0.168 ppb	3,684 cps	1.7 %
138Ba (KED)	6.088 ppb	202,242 cps	0.9 %
139La (KED)	0.552 ppb	36,970 cps	1.8 %
140Ce (KED)	1.132 ppb	103,678 cps	1.9 %
141Pr (KED)	0.125 ppb	11,661 cps	3.5 %
142Nd (KED)	0.678 ppb	26,480 cps	1.4 %
152Sm (KED)	0.095 ppb	3,453 cps	3.4 %
153Eu (KED)	0.018 ppb	1,242 cps	8.1 %
158Gd (KED)	0.080 ppb	4,181 cps	1.7 %
164Dy (KED)	0.057 ppb	3,213 cps	6.0 %
165Ho (KED)	0.011 ppb	2,144 cps	2.0 %
166Er (KED)	0.025 ppb	1,995 cps	6.1 %
169Tm (KED)	0.004 ppb	842 cps	8.1 %
174Yb (KED)	0.023 ppb	1,911 cps	7.1 %
175Lu (KED)	0.003 ppb	426 cps	7.3 %
205Tl (KED)	0.011 ppb	1,908 cps	7.8 %
208Pb (KED)	1.039 ppb	141,165 cps	1.5 %
232Th (KED)	0.155 ppb	36,206 cps	2.0 %
238U (KED)	0.044 ppb	12,079 cps	1.9 %

Sample Summary

Instrument ID: iCAP Q

Analysis index: 23

Analysis name: 316jian

Analysis started at: 8/31/2021 5:22:03 PM

User name: WINDOWS-UPCI4ER\Administrator

Category	Concentration average	Concentration RSD
9Be (KED)	0.019 ppb	86.6 %
11B (KED)	4.435 ppb	12.9 %
24Mg (KED)	634.257 ppb	1.5 %
27Al (KED)	841.949 ppb	0.6 %
51V (KED)	1.551 ppb	1.1 %
52Cr (KED)	4.749 ppb	1.2 %
55Mn (KED)	20.663 ppb	1.4 %
56Fe (KED)	837.577 ppb	0.5 %
58Ni (KED)	4.101 ppb	2.9 %
59Co (KED)	0.388 ppb	3.1 %
63Cu (KED)	7.224 ppb	1.5 %
64Zn (KED)	188.240 ppb	1.1 %
69Ga (KED)	1.942 ppb	2.3 %
75As (KED)	0.691 ppb	1.6 %
80Se (KED)	1.836 ppb	27.7 %
85Rb (KED)	4.552 ppb	0.5 %
88Sr (KED)	7.106 ppb	1.5 %
107Ag (KED)	0.040 ppb	2.1 %
114Cd (KED)	0.148 ppb	4.5 %
133Cs (KED)	0.185 ppb	5.4 %
138Ba (KED)	5.674 ppb	1.4 %
139La (KED)	0.625 ppb	1.4 %
140Ce (KED)	1.301 ppb	0.6 %
141Pr (KED)	0.146 ppb	1.6 %
142Nd (KED)	0.780 ppb	4.6 %
152Sm (KED)	0.108 ppb	3.2 %
153Eu (KED)	0.020 ppb	7.7 %
158Gd (KED)	0.093 ppb	1.9 %
164Dy (KED)	0.064 ppb	2.0 %
165Ho (KED)	0.013 ppb	4.4 %
166Er (KED)	0.030 ppb	1.1 %
169Tm (KED)	0.004 ppb	4.6 %
174Yb (KED)	0.026 ppb	5.8 %
175Lu (KED)	0.004 ppb	12.5 %
205Tl (KED)	0.010 ppb	1.3 %
208Pb (KED)	0.926 ppb	3.0 %
232Th (KED)	0.161 ppb	3.7 %
238U (KED)	0.043 ppb	3.3 %

Category	Concentration average	Intensity average	Intensity RSD
9Be (KED)	0.019 ppb	2 cps	86.6 %
11B (KED)	4.435 ppb	457 cps	7.9 %
24Mg (KED)	634.257 ppb	263,549 cps	1.5 %
27Al (KED)	841.949 ppb	83,673 cps	0.6 %
51V (KED)	1.551 ppb	9,859 cps	1.1 %
52Cr (KED)	4.749 ppb	47,353 cps	1.2 %
55Mn (KED)	20.663 ppb	96,456 cps	1.4 %
56Fe (KED)	837.577 ppb	7,582,275 cps	0.5 %
58Ni (KED)	4.101 ppb	52,039 cps	2.8 %
59Co (KED)	0.388 ppb	7,653 cps	3.1 %

Category	Concentration average	Intensity average	Intensity RSD
63Cu (KED)	7.224 ppb	113,129 cps	1.5 %
64Zn (KED)	188.240 ppb	697,792 cps	1.0 %
69Ga (KED)	1.942 ppb	9,367 cps	2.2 %
75As (KED)	0.691 ppb	767 cps	1.6 %
80Se (KED)	1.836 ppb	1,220 cps	13.1 %
85Rb (KED)	4.552 ppb	18,628 cps	0.5 %
88Sr (KED)	7.106 ppb	40,266 cps	1.5 %
107Ag (KED)	0.040 ppb	1,922 cps	1.9 %
114Cd (KED)	0.148 ppb	2,705 cps	3.9 %
133Cs (KED)	0.185 ppb	4,063 cps	5.4 %
138Ba (KED)	5.674 ppb	189,185 cps	1.4 %
139La (KED)	0.625 ppb	41,852 cps	1.4 %
140Ce (KED)	1.301 ppb	119,112 cps	0.6 %
141Pr (KED)	0.146 ppb	13,645 cps	1.6 %
142Nd (KED)	0.780 ppb	30,465 cps	4.6 %
152Sm (KED)	0.108 ppb	3,951 cps	3.2 %
153Eu (KED)	0.020 ppb	1,409 cps	7.6 %
158Gd (KED)	0.093 ppb	4,869 cps	1.9 %
164Dy (KED)	0.064 ppb	3,603 cps	2.0 %
165Ho (KED)	0.013 ppb	2,531 cps	4.4 %
166Er (KED)	0.030 ppb	2,287 cps	1.0 %
169Tm (KED)	0.004 ppb	968 cps	4.6 %
174Yb (KED)	0.026 ppb	2,188 cps	5.8 %
175Lu (KED)	0.004 ppb	473 cps	12.5 %
205Tl (KED)	0.010 ppb	1,826 cps	1.3 %
208Pb (KED)	0.926 ppb	127,334 cps	2.7 %
232Th (KED)	0.161 ppb	37,765 cps	3.7 %
238U (KED)	0.043 ppb	11,750 cps	3.3 %

Sample Summary

Instrument ID: iCAP Q

Analysis index: 24

Analysis name: 308jian

Analysis started at: 8/31/2021 5:25:37 PM

User name: WINDOWS-UPCI4ER\Administrator

Category	Concentration average	Concentration RSD
9Be (KED)	0.009 ppb	173.2 %
11B (KED)	6.626 ppb	4.8 %
24Mg (KED)	802.130 ppb	1.8 %
27Al (KED)	1,248.072 ppb	1.0 %
51V (KED)	2.223 ppb	0.9 %
52Cr (KED)	5.224 ppb	0.4 %
55Mn (KED)	26.894 ppb	0.9 %
56Fe (KED)	1,187.264 ppb	1.1 %
58Ni (KED)	5.268 ppb	1.3 %
59Co (KED)	0.576 ppb	2.2 %
63Cu (KED)	8.171 ppb	0.9 %
64Zn (KED)	203.162 ppb	0.4 %
69Ga (KED)	2.649 ppb	2.0 %
75As (KED)	0.917 ppb	2.9 %
80Se (KED)	2.191 ppb	7.8 %
85Rb (KED)	3.795 ppb	3.3 %
88Sr (KED)	9.822 ppb	1.3 %
107Ag (KED)	0.074 ppb	2.5 %
114Cd (KED)	0.125 ppb	8.4 %
133Cs (KED)	0.284 ppb	2.4 %
138Ba (KED)	8.208 ppb	1.1 %
139La (KED)	0.850 ppb	1.0 %
140Ce (KED)	1.788 ppb	2.5 %
141Pr (KED)	0.207 ppb	3.0 %
142Nd (KED)	1.081 ppb	2.6 %
152Sm (KED)	0.144 ppb	4.5 %
153Eu (KED)	0.029 ppb	4.4 %
158Gd (KED)	0.130 ppb	2.2 %
164Dy (KED)	0.093 ppb	2.1 %
165Ho (KED)	0.018 ppb	1.7 %
166Er (KED)	0.044 ppb	2.6 %
169Tm (KED)	0.007 ppb	5.3 %
174Yb (KED)	0.039 ppb	2.7 %
175Lu (KED)	0.005 ppb	9.1 %
205Tl (KED)	0.014 ppb	5.3 %
208Pb (KED)	1.072 ppb	2.4 %
232Th (KED)	0.229 ppb	2.3 %
238U (KED)	0.063 ppb	2.0 %

Category	Concentration average	Intensity average	Intensity RSD
9Be (KED)	0.009 ppb	1 cps	173.2 %
11B (KED)	6.626 ppb	594 cps	3.4 %
24Mg (KED)	802.130 ppb	333,113 cps	1.8 %
27Al (KED)	1,248.072 ppb	123,994 cps	1.0 %
51V (KED)	2.223 ppb	14,130 cps	0.9 %
52Cr (KED)	5.224 ppb	52,059 cps	0.4 %
55Mn (KED)	26.894 ppb	125,485 cps	0.9 %
56Fe (KED)	1,187.264 ppb	10,745,281 cps	1.1 %
58Ni (KED)	5.268 ppb	66,191 cps	1.3 %
59Co (KED)	0.576 ppb	11,370 cps	2.2 %

Category	Concentration average	Intensity average	Intensity RSD
63Cu (KED)	8.171 ppb	127,535 cps	0.9 %
64Zn (KED)	203.162 ppb	752,545 cps	0.4 %
69Ga (KED)	2.649 ppb	12,566 cps	1.9 %
75As (KED)	0.917 ppb	1,010 cps	2.9 %
80Se (KED)	2.191 ppb	1,331 cps	4.0 %
85Rb (KED)	3.795 ppb	15,541 cps	3.3 %
88Sr (KED)	9.822 ppb	55,571 cps	1.3 %
107Ag (KED)	0.074 ppb	3,453 cps	2.4 %
114Cd (KED)	0.125 ppb	2,342 cps	7.1 %
133Cs (KED)	0.284 ppb	6,238 cps	2.4 %
138Ba (KED)	8.208 ppb	269,065 cps	1.1 %
139La (KED)	0.850 ppb	56,867 cps	1.0 %
140Ce (KED)	1.788 ppb	163,702 cps	2.5 %
141Pr (KED)	0.207 ppb	19,266 cps	3.0 %
142Nd (KED)	1.081 ppb	42,201 cps	2.6 %
152Sm (KED)	0.144 ppb	5,243 cps	4.5 %
153Eu (KED)	0.029 ppb	2,024 cps	4.4 %
158Gd (KED)	0.130 ppb	6,819 cps	2.2 %
164Dy (KED)	0.093 ppb	5,280 cps	2.1 %
165Ho (KED)	0.018 ppb	3,609 cps	1.7 %
166Er (KED)	0.044 ppb	3,244 cps	2.4 %
169Tm (KED)	0.007 ppb	1,490 cps	5.3 %
174Yb (KED)	0.039 ppb	3,240 cps	2.7 %
175Lu (KED)	0.005 ppb	658 cps	9.1 %
205Tl (KED)	0.014 ppb	2,380 cps	5.3 %
208Pb (KED)	1.072 ppb	145,233 cps	2.2 %
232Th (KED)	0.229 ppb	53,508 cps	2.3 %
238U (KED)	0.063 ppb	17,199 cps	2.0 %

Sample Summary

Instrument ID: iCAP Q

Analysis index: 25

Analysis name: 302jian

Analysis started at: 8/31/2021 5:29:04 PM

User name: WINDOWS-UPCI4ER\Administrator

Category	Concentration average	Concentration RSD
9Be (KED)	0.028 ppb	100.0 %
11B (KED)	8.799 ppb	12.7 %
24Mg (KED)	1,088.917 ppb	1.1 %
27Al (KED)	1,514.936 ppb	1.3 %
51V (KED)	3.000 ppb	1.0 %
52Cr (KED)	10.791 ppb	1.0 %
55Mn (KED)	37.490 ppb	0.8 %
56Fe (KED)	1,603.505 ppb	1.2 %
58Ni (KED)	7.354 ppb	1.2 %
59Co (KED)	0.783 ppb	1.0 %
63Cu (KED)	8.969 ppb	0.6 %
64Zn (KED)	194.217 ppb	0.5 %
69Ga (KED)	3.256 ppb	2.5 %
75As (KED)	0.996 ppb	10.0 %
80Se (KED)	2.014 ppb	7.3 %
85Rb (KED)	5.300 ppb	1.0 %
88Sr (KED)	13.135 ppb	1.4 %
107Ag (KED)	0.064 ppb	5.3 %
114Cd (KED)	0.139 ppb	5.3 %
133Cs (KED)	0.336 ppb	2.4 %
138Ba (KED)	9.726 ppb	1.1 %
139La (KED)	1.194 ppb	1.6 %
140Ce (KED)	2.524 ppb	3.0 %
141Pr (KED)	0.290 ppb	4.5 %
142Nd (KED)	1.529 ppb	0.5 %
152Sm (KED)	0.214 ppb	3.3 %
153Eu (KED)	0.042 ppb	3.4 %
158Gd (KED)	0.184 ppb	3.0 %
164Dy (KED)	0.129 ppb	1.2 %
165Ho (KED)	0.023 ppb	0.6 %
166Er (KED)	0.064 ppb	3.0 %
169Tm (KED)	0.009 ppb	7.3 %
174Yb (KED)	0.050 ppb	5.0 %
175Lu (KED)	0.008 ppb	4.9 %
205Tl (KED)	0.016 ppb	2.5 %
208Pb (KED)	1.446 ppb	2.3 %
232Th (KED)	0.308 ppb	1.3 %
238U (KED)	0.078 ppb	0.6 %

Category	Concentration average	Intensity average	Intensity RSD
9Be (KED)	0.028 ppb	3 cps	100.0 %
11B (KED)	8.799 ppb	731 cps	9.6 %
24Mg (KED)	1,088.917 ppb	451,952 cps	1.1 %
27Al (KED)	1,514.936 ppb	150,490 cps	1.3 %
51V (KED)	3.000 ppb	19,071 cps	1.0 %
52Cr (KED)	10.791 ppb	107,324 cps	1.0 %
55Mn (KED)	37.490 ppb	174,845 cps	0.8 %
56Fe (KED)	1,603.505 ppb	14,510,283 cps	1.2 %
58Ni (KED)	7.354 ppb	91,467 cps	1.2 %
59Co (KED)	0.783 ppb	15,441 cps	1.0 %

Category	Concentration average	Intensity average	Intensity RSD
63Cu (KED)	8.969 ppb	139,682 cps	0.6 %
64Zn (KED)	194.217 ppb	719,724 cps	0.5 %
69Ga (KED)	3.256 ppb	15,314 cps	2.4 %
75As (KED)	0.996 ppb	1,094 cps	9.8 %
80Se (KED)	2.014 ppb	1,276 cps	3.6 %
85Rb (KED)	5.300 ppb	21,682 cps	1.0 %
88Sr (KED)	13.135 ppb	74,249 cps	1.4 %
107Ag (KED)	0.064 ppb	3,006 cps	5.0 %
114Cd (KED)	0.139 ppb	2,566 cps	4.6 %
133Cs (KED)	0.336 ppb	7,356 cps	2.4 %
138Ba (KED)	9.726 ppb	316,875 cps	1.0 %
139La (KED)	1.194 ppb	79,909 cps	1.6 %
140Ce (KED)	2.524 ppb	230,995 cps	3.0 %
141Pr (KED)	0.290 ppb	27,018 cps	4.5 %
142Nd (KED)	1.529 ppb	59,652 cps	0.5 %
152Sm (KED)	0.214 ppb	7,796 cps	3.3 %
153Eu (KED)	0.042 ppb	2,945 cps	3.4 %
158Gd (KED)	0.184 ppb	9,645 cps	3.0 %
164Dy (KED)	0.129 ppb	7,318 cps	1.2 %
165Ho (KED)	0.023 ppb	4,662 cps	0.6 %
166Er (KED)	0.064 ppb	4,658 cps	2.8 %
169Tm (KED)	0.009 ppb	1,982 cps	7.3 %
174Yb (KED)	0.050 ppb	4,206 cps	5.0 %
175Lu (KED)	0.008 ppb	944 cps	4.9 %
205Tl (KED)	0.016 ppb	2,758 cps	2.5 %
208Pb (KED)	1.446 ppb	191,100 cps	2.1 %
232Th (KED)	0.308 ppb	71,898 cps	1.3 %
238U (KED)	0.078 ppb	21,271 cps	0.6 %